



# Clippings



## Raspberry Crazy Ant

By Wizzie Brown

In 2002, the Raspberry crazy ant, *Nylanderia* sp. near *pubens*, was found in the Houston area. It began to spread and can now be located in 21 counties, mostly around the Houston coastal area. The ants have been recently identified in Travis and Williamson counties (See Fig 1.).



Fig 2.

Raspberry crazy ants are reddish-brown, but color darkness may vary. Workers have long legs and long antennae and

bodies that are about 1/8 an inch long. The ants have long hairs on their body and 12 segmented antennae (See Fig 2.).

Colonies of these ants are massive (millions of ants). The colonies are polygyne and contain multiple queens, workers and brood (eggs, larvae, pupae). Colonies, or nests, can be found under or within almost any object (See Fig 3.) Examples include tree stumps, soil, potted plants, mulch, concrete, etc. Nests are primarily found outside, but the ants often forage indoors looking for food and water.

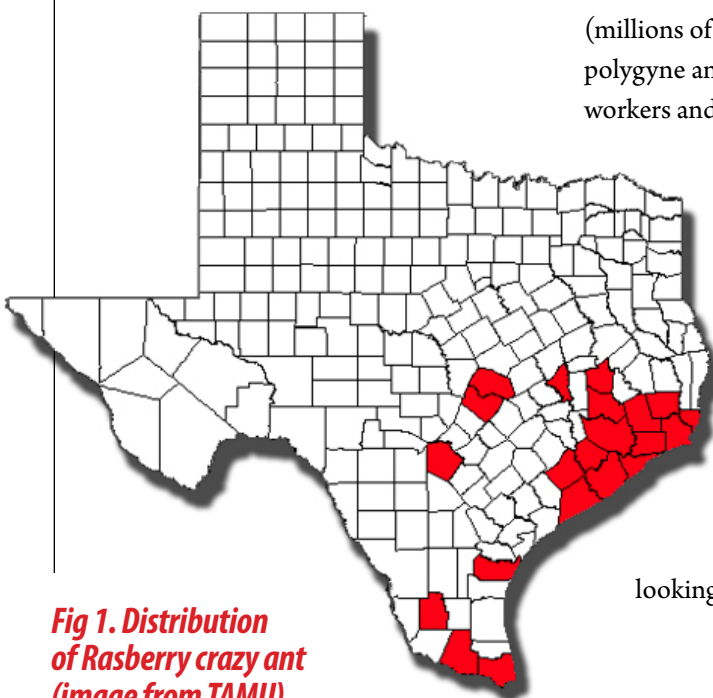


Fig 1. Distribution of Raspberry crazy ant (image from TAMU)

(continued on page 5)

### Next Meeting:

Tuesday,  
February 7, 2012

#### Location:

Third Base Sports Bar  
3107 S IH 35  
Round Rock, TX 78664  
(map on page 7)

#### Time:

6:30 PM

#### Program:

**Region VIII Happy Hour!**  
This is just a fun networking event...no presentation and just a few minutes of official business.

#### Cost:

We will provide one free drink ticket for each person along with some appetizer trays at no charge. After that it is cash bar.

#### RSVP:

Amy Edwards by Friday,  
February 3.  
Email: amyk65@gmail.com  
Phone: 512-789-6522



# Copper Rock Nursery

Wholesale Only

Austin's Finest Wholesale Nursery

Lynn and Jan Brown, Owners

Trees  
Shrubs  
Perennials

Jose Ibarra, Yard Foreman

Garden Tools  
Mulches  
Bedding Plants

We are on Fitzhugh Road, just off 290 West

512-301-5100 • 10944 Fitzhugh Rd., Austin, TX 78736 • 512-301-5108 fax

## REGION VIII OFFICERS

### STATE REGIONAL DIRECTOR

Larry Best, TCNP 205  
Best Horticultural Solutions  
806-786-9787

### REGION CHAIR

Jared Pyka  
Native Texas Nursery  
512-276-9801

### VICE-CHAIR

Brad Seever  
Newton Nursery  
512-310-0055

### PAST REGION CHAIR

Sandy Schutze  
ABC Home & Commercial Services  
512-845-9448

### SUPPLIER DIRECTOR / SECRETARY

Amy Edwards  
Best Horticultural Solutions  
512-789-6522

### TREASURER

Larry Best, TCNP 205  
Best Horticultural Solutions  
806-786-9787

### GROWER DIRECTOR

Mark Bentsen  
Membership Chair  
Greenleaf Nursery  
512-784-5545

### LANDSCAPE DIRECTOR

Russell Hackworth  
Member Benefits / Preferred  
Vendor Chair  
DFI Resources, LLC  
512-695-2319

### RETAIL DIRECTOR

Emelie McDaniel  
Education / Certification Chair  
Red Barn Garden Center  
(512) 335-8093

*Texas Nursery & Landscape Association  
7730 South IH-35 Austin TX, 78745-6698  
Phone: (512) 280-5182 Fax: (512) 280-3012  
Email: [info@tnlaonline.org](mailto:info@tnlaonline.org)  
Web Page: [www.tnlaonline.org](http://www.tnlaonline.org)  
Region VIII email: [region8@tnlaonline.org](mailto:region8@tnlaonline.org)*



## *a note from your* **REGION VIII CHAIR**

I have greatly enjoyed the past year serving as Chairman for TNLA Region VIII. Serving on the Board is a small time commitment, but the friends and new skills will last a lifetime. I have learned to be an event planner and promoter, public speaker, and newsletter editor. Serving has allowed me the opportunity to participate in politics at the local, state, and national levels. Our region has completed community service projects and even awarded a scholarship to a college student studying horticulture. My career has benefited greatly from the networking at TNLA meetings and other events. I encourage all of our members to consider serving on the Board in some capacity in the future. It takes a team of friendly, organized people to make sure we have fun, educational events each month, and our 2011-12 Board was awesome!

Even if your schedule does not allow you to make all of the meetings, one way that everyone can contribute to the region is to submit newsletter articles. These articles can be about anything from current politics affecting our industry to a new rose cultivar or new organic fertilizer. The point here is to share knowledge that will benefit our members, especially the ones that can't make it to our meeting presentations. Photos from past TNLA events are also appreciated, as many times the Board members are busy conducting the meeting and don't get as many "action" photos as we would like.

March is my last month as Chairman and I know that Brad Seever and the new 2012-13 Board will appreciate all of your help and participation during the upcoming year. Thanks to everyone for making this such a great experience. 🐦

-Jared Pyka, TNLA Region VIII Chairman

### MISSION STATEMENT

**The Texas Nursery & Landscape Association's mission is to enhance members' business success through legislative/regulatory advocacy, education, networking, and promotion of professionalism.**

# The Emerald Garden

AUSTIN'S MOST UNIQUE NURSERY



Wholesale Nursery and Watergarden  
5700 Hwy. 290 W., Austin, TX 78735-8702

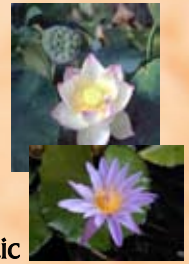


**Contractor Pond Supplies**  
Filters, Liners, Pumps and More  
Everything you need to  
build your pond....all in one place!



Fish

Aquatic



Plants

Extensive Inventory of Aquatic  
Plants Available Year-Round



Landscape Rock

Unique  
Mexican Patio  
Giant White Patio  
Accent Boulders and  
Pebbles



Statuary

Fountains and  
Water Features



Proud  
Member  
of



www.emerald-garden.com  
(512) 288-5900

Landscape Plants  
Shade and Ornamental Trees



Shrubs  
Seasonal Color

*Austin Plant  
Specialist*

Texas Natives,  
Xeriscape and Exotics



**We see green.** With over 30 years of experience, our specialists know what to look for when it comes to finding cost-effective insurance coverage for your green industry business. As a Trusted Choice® independent agency, we'll access the nation's leading insurance companies to provide all the coverage your business needs in one strong yet cost-effective solution.

Call **800-899-3750** today for a quote or no-cost insurance review.



**HOTCHKISS**  
INSURANCE AGENCY, LLC

Experience, Choice and Service

Providing comprehensive insurance programs for Texas green industry businesses - [www.hiainc.com](http://www.hiainc.com)

## Raspberry Crazy Ant

(continued from page 1)

These ants form loose foraging trails and scurry randomly along the trail, hence the name “crazy” ant. Foraging ants typically follow structural lines- foundations, sidewalks, etc.- but large trails can also be found over open areas. They do not form mounds or emerge from the ground from a centralized opening.

Raspberry crazy ants are omnivores and eat almost anything. The workers, in addition to foraging for food, will “tend” honeydew-producing insects such as aphids, scale insect and mealybugs. Workers are also attracted to sweet-producing parts of plants such as nectaries or over-ripened fruit.



**Fig 3. Colony found in a flower pot tray (image from TAMU).**



**Fig 4. Crazy ant, *Paratrechina longicornis* (photo by Drees).**



**Fig 5. Raspberry crazy ants covering a lawn (photo by Tom Rasberry).**

Since Raspberry crazy ants can nest within numerous materials and objects it is possible that they can be transported to new locations through gardening material- mulch, soil, potted plants, etc. Before transporting gardening material, it is very important to thoroughly inspect the item(s) for infestation.

Raspberry crazy ants are sometimes confused with the black crazy ant, *Paratrechina longicornis*. The crazy ant looks similar, but has longer antennae and legs (See Fig 4) than the Raspberry crazy ant. The crazy ant also tends to be darker in color than the Raspberry crazy ant (blackish vs. reddish-brown).

Treatment for Raspberry crazy ants can become a problem based on the considerable number of ants. Buffer

zones can be created using pesticides and the “buffer zones” may last about 2-3 months. Dead ants should be removed from the area after treatment otherwise a “carpet” of ants may form over the lawn (See Fig 5). Any infested plant material infested with these ants would need to be treated before they are sold or transported to a different location. 🐜

---

*Wizzie Brown is an Extension Program Specialist with Texas AgriLife Extension Service. She received her Bachelor's of Science in entomology from The Ohio State University and a Master's of Science in entomology from Texas A&M University. After leaving Texas A&M, Wizzie worked in structural pest control before taking a job with Texas AgriLife Extension Service in Austin.*

**FOR MORE INFORMATION**

**[urbanentomology.tamu.edu/ants/rasberry.html](http://urbanentomology.tamu.edu/ants/rasberry.html)**



# THE REAL DEAL.

**We're more than a product source, we're your business resource.**  
Stop by your local branch or go online to see how we can help grow your business and provide more value for your buck.

**FIND US:**  
www.ewing1.com

**TALK TO US:**  
800.343.9464

Check out our **earn** partner program  
and take advantage of money-saving offers!



IRRIGATION | TURF PRODUCTS | LANDSCAPE LIGHTING | EROSION CONTROL | WATER FEATURES | HARDSCAPE

# DISCOVER THE DAVEY DIFFERENCE.



*For All Your Tree, & Shrub Care Needs...*

**“An Employee-Owned Company”**

- Complete Tree & Shrub Care
- Deep-Root Fertilization
- Insect & Disease Control
- ISA Certified Arborists
- Licensed and Insured
- FREE Estimates
- Quality Pruning
- Tree & Shrub Removals
- Tree Planting
- Stump Grinding
- Lightning Protection

**DAVEY**   
*Proven Solutions for a Growing World*

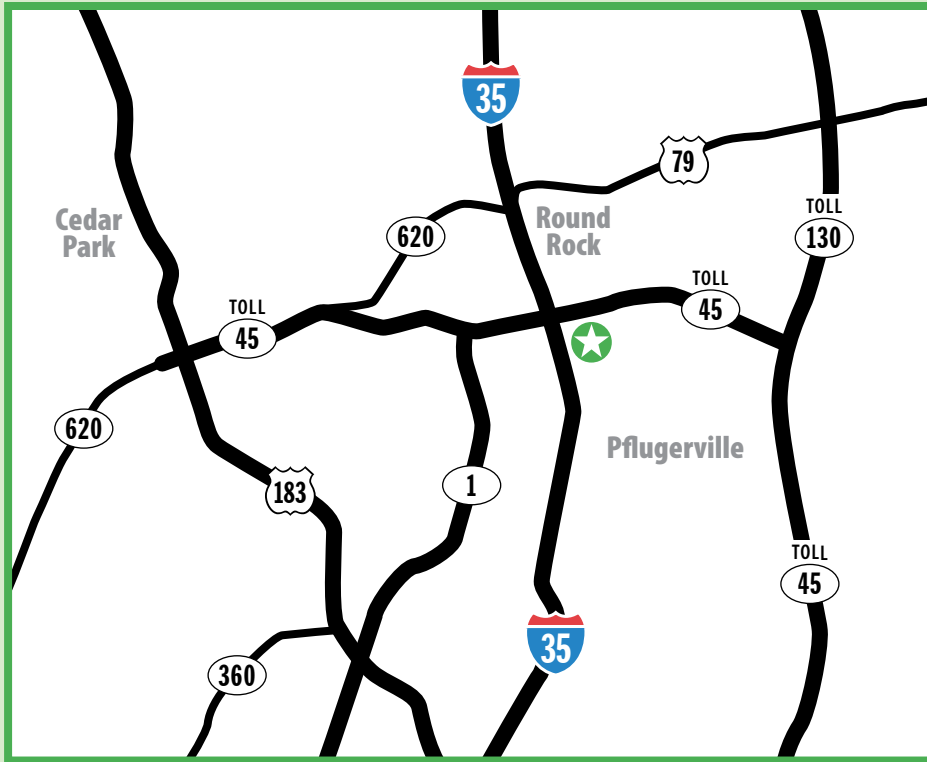
**512-451-4986**

[www.davey.com](http://www.davey.com)

**Austin**



**THE DAVEY TREE EXPERT COMPANY**



## Map to February Region VIII Meeting

**Tuesday,  
February 7, 2012**

**Location:**

Third Base Sports Bar  
3107 S IH 35  
Round Rock, TX 78664

**Time:** 6:30 PM

**Region VIII Happy Hour!**

This is just a fun networking event...no presentation and just a few minutes of official business.

**RSVP:** Amy Edwards by February 3, Email: amyk65@gmail.com, Phone: 512-789-6522





**QUALITY.**  
**VARIETY.**  
**AVAILABILITY.**  
**SERVICE.**

For more than fifty-five years,  
 we've helped our customers grow  
 by providing the highest quality, most variety,  
 greatest availability and best service  
 in the landscape industry.

**Come see how we can help you grow.**



**SHEMIN—THE LANDSCAPE SUPPLY COMPANY**

**AUSTIN**

12550 Harris Branch Pkwy  
 Manor, TX 78653-3752  
 Phone [512] 278-0997  
 Fax [512] 278-1120

On the web at [www.shemin.net](http://www.shemin.net).

Locations to serve you in  
 major metropolitan areas including  
 additional Texas landscape supply  
 centers at:

**LEWISVILLE (DALLAS/FT WORTH) • HOUSTON**

Helping you grow:



THE LANDSCAPE SUPPLY COMPANY<sup>SM</sup>



**YES, YOU CAN**

[own a Cat<sup>®</sup>]

Take advantage of this special  
 financing: HOLT CAT<sup>®</sup> is offering  
**0% APR for 36 months\*** for  
 qualified buyers on select  
 Caterpillar<sup>®</sup> machines.

**Contact your HOLT CAT  
 sales rep for program details.**



Austin (512) 282-2011  
 Pflugerville (512) 990-7743  
[holtcat.com](http://holtcat.com)



\*Offer good through March 31, 2012 on select new models. Cannot be combined with any other offers. Subject to credit approval. Additional terms may apply © 2012 HOLT CAT.

the news you **NEED** | the source you **TRUST**

Finding all the nursery and landscaping news  
 has never been easier thanks to the **TNLA Green  
 Matters**. The **Green Matters**, from the Texas  
 Nursery and Landscape Association, provides only  
 the articles and information that you need. Sign up  
 today to start receiving great content from TNLA  
 every week.

Subscribe today at:  
[multibriefs.com/briefs/TNLA](http://multibriefs.com/briefs/TNLA)



## Water Meal Study with TopFilm™ in Ornamental Fish Production

*Data from a Tropical Aquaculture Center (January 2012)*

**W**ater Meal (*Wolffia* spp.) has always been a real scourge in the Ornamental Fish Industry. Once you have it, it seems to spread from pond to pond quite easily attached to anything from workers to wading birds including alligators, otters and raccoons.

The only method up to this point has been Sonar (Fluridone) though very costly.

I have tried many, many concoctions with little or no success until I received a sample of Top-Film from Biosorb Inc. ([www.Biosorb-Inc.com](http://www.Biosorb-Inc.com)). Mind you I receive a multitude of aquaculture products as samples and rarely do any actually do what they claim to.

Top-Film on the other hand is a very different type of product and did do exactly as claimed. Please see the web-link below for an explanation.

<http://www.biosorb-inc.com/TopFilm%20-%20New%20Technology.pdf>



**Save the Date!**

**Feb. 17, 2012**

**10:00 a.m. - 3:00 p.m.**

*(Lunch will be provided)*

**Texas Nursery & Landscape Association's**

**2012  
Growers' Summit**

***An open discussion  
on specific issues  
affecting Texas  
Growers.***

**DOWNLOAD  
A REGISTRATION  
FORM**

***For a complete schedule,  
please visit the TNLA  
Education Page***

## Cow Wow Liquid Fertilizer Selected for Federal Procurement Preference

*Recycled Manure Product Recognized for Sustainable Benefits*

**D**airy Waste Management, LLC (in Georgetown, TX) is pleased to announce the U.S. Department of Agriculture's (USDA) BioPreferred program has added Cow Wow Liquid Fertilizer to its online product catalog. BioPreferred is a Federal program that seeks to increase the purchase and use of biobased goods — products made from biological or renewable materials.

“Manure has a secure reputation for producing phenomenal results.

Now recognition by the USDA cements Cow Wow's respectability for both performance and positive environmental impact”, states Leslie Hearne, founder of the company. “Acceptance at the federal level is a testament to Cow Wow's ‘trifecta of sustainability’ – recycling manure into something good for the earth, lessening dairies' tremendous waste disposal problem, and reducing the toxic gasses emitted from evaporating manure.”

Cow Wow is liquid dairy cow manure with no manure odor. It is pure manure concentrate, not a compost tea, which replenishes organic matter in the soil and naturally provides every nutrient required for healthy turf and plants. Cow Wow is totally safe with no pathogens, no weed seeds, and no fear of burning, even when applied during the heat of the summer. Simply dilute and use as a foliar spray or soil soak.

Find out more at: [www.cowwow.com](http://www.cowwow.com) | [www.biopreferred.gov](http://www.biopreferred.gov)

# LANDMARK

NURSERIES, INC.

Visit our website for:

Price List

Monthly Specials

Plant Photos & Descriptions

Mulch Calculator

Spacing Calculator

New Customer Forms

*Call for availability*



[www.landmarknurseries.com](http://www.landmarknurseries.com)

1510 ROYSTON LANE • ROUND ROCK, TEXAS 78664 • PHONE (512) 251-9238 • FAX (512) 251-7117

## Central Texas' Most Unique & Complete Garden Center

Water Lilies      Pond Liner  
Lotus              Pumps  
Bog Plants        Filters  
Koi & Goldfish   Skimmers  
Nursery Plants   Fountains  
Statuary          Asian Pottery  
Disappearing Fountain Kits

**Wholesale Prices Available  
for Landscapers**

1407 N. Bell Blvd.  
Cedar Park, Tx 78613  
512-260-5050  
[hillcountrywatergardens.com](http://hillcountrywatergardens.com)

HILL COUNTRY  
**WATER  
GARDENS**  
&  
NURSERY