

TNLA GREEN

JAN/FEB 2014

THE OFFICIAL PUBLICATION OF THE TEXAS NURSERY & LANDSCAPE ASSOCIATION

2014 TEXAS *excellence* IN LANDSCAPING *awards*



STARTING ON PAGE 7

Tips for Winning TEIL Entries

PAGE 41



Texas Superstars Promotions for 2014

PAGE 42

PLUS:

45 Certification Quarterly Quiz

49 Green Vi\$ion

53 Notes from SFA Gardens

61 Calendar of Events



Ingredients: Grass seed, fertilizer, AquaSmart, water-efficient nozzles, smart controller, soil moisture sensors. May contain traces of water and sunshine.

*Water and sunshine may vary state to state. Please see your local branch for more details.

ASK ABOUT THE AMAZING BENEFITS OF

 **AquaSmart**
A SOIL ENHANCEMENT PRODUCT


www.ewing1.com/locations

IRRIGATION & WATER MANAGEMENT PRODUCTS | TURF PRODUCTS | LANDSCAPE LIGHTING | RAINWATER HARVESTING | HARDSCAPE

TNLA GREEN

JAN • FEB 2014

FEATURES

7 Texas Excellence in Landscaping Awards

GOLD

AJ's Landscape & Design Inc. Rieb Residence	8
Clean Scapes, LP Boot Ranch	10
Lambert Landscape Company Classic Contemporary Retreat	12
Southern Botanical Rose Residence	14
ValleyCrest Landscape Development Dallas Arboretum Rory Meyers Children's Adventure Garden	16
ValleyCrest Landscape Development Klyde Warren Park	18
ValleyCrest Nustar Energy Campus Water Feature	20

SILVER

Absolutely Outdoors Jefferson Project	22
AJ's Landscape & Design Inc. McPhail Residence	23
Clean Scapes, LP Hill Country Galleria	24
Clean Scapes, LP River Place Corporate Center	25
Greater Texas Landscape Services Austin Center	26
Lawns of Dallas McCann Residence	27
Lawns of Dallas McEvoy Residence	28
Lawns of Dallas Bent Tree Estate	29
Metheny Commercial Lawn Maintenance, Inc. George W. Bush Presidential Library	30
Roundtree Landscaping, Inc. Townhome Residence	31
Southern Botanical Royal Oaks Country Club	34
Southern Botanical Park Cities Estate	35
Site Planning Site Development 290 John Carpenter Courtyard Renovation	36
ValleyCrest Landscape Maintenance Research Park Place	37

BRONZE

AJ's Landscape & Design Inc. Vickery Residence	38
Clean Scapes, LP Research Park Plaza, Buildings III & IV	38
Greater Texas Landscape Services 816 Congress Terrace	38
Site Planning Site Development TRT Holdings Headquarters	39
Southern Botanical Katy Trail Outpost	39
ValleyCrest Landscape Development Circuit of The Americas	39

42 Texas Superstars Promotions for 2014

45 Certification Quarterly Quiz: Basil Downy Mildew

COLUMNS:

49 **Green Vi\$ion** In Defense of Turf *by Mengmeng Gu, Ph.D.*

53 **Notes from SFA Gardens** Connecting People, Plants and Plans
by Dr. Dave Creech and Dawn Stover

DEPARTMENTS

48 Newsbites	61 Calendar of Events
58 New Members	61 Newly Certifieds
59 Membership Application	62 Advertisers Index



7



42



53

Texas Nursery & Landscape Association
7730 South IH-35
Austin, TX 78745-6698
phone: 512.280.5182 or 800.880.0343
fax: 512.280.3012
email: info@tnlaonline.org
www.tnlaonline.org



Good coverage. It's essential for growth.



With over 30 years of experience and the endorsement of the Texas Nursery and Landscape Association (TNLA), Texas Turf Irrigation Association (TTIA) and many other industry associations, we understand what it takes to protect your green industry business. We'll make sure you have the coverage you need to protect your business and that it's cost-effective. Both are good objectives for growth. As a Trusted Choice® independent agency, we'll access many of the nation's leading insurance companies to provide all the coverage your business needs in one strong yet cost-effective solution.

Call 800-899-9810 or visit www.hiallc.com today
to schedule a no-obligation consultation.

Online at www.hiallc.com



HOTCHKISS
INSURANCE AGENCY, LLC

Experience, Choice and Service

30 years of experience and the nation's leading insurance companies **all under one roof** - www.hiallc.com

General Liability » Business Property » Workers' Compensation » Equipment » Pesticide & Herbicide » Business Auto
Employee Benefits » Pollution Liability » Nursery Inventory » Umbrella » Bonds and more!

the official publication of the
Texas Nursery & Landscape Association

JANUARY/FEBRUARY 2014 • VOL. XVI NO. 1

OFFICERS

Chairman of the Board
Mark Chamblee, TMCNP Tyler

Chairman-Elect
Paul Tomaso, TCNP Dallas

Immediate Past Chairman
Sam Weger, TMCNP Fort Worth

President
Amy Graham Austin

BOARD OF DIRECTORS

Region I Billy Long, TCLP San Antonio

Region II James Curtice, TCLP Houston

Region III Herman Vess, TMCNP Edgewood

Region IV Jason Craven Dallas

Region V Mike Whisenand Fort Worth

Region VI Steven Akers Slaton

Region VII Todd Kinney, TMCNP Donna

Region VIII JJ McAuliff

Supplier Director Bobby Spence Fort Worth

Landscape Director Johnette Taylor Dallas

Grower Director Bill Carson Austin

Retail Director Donna Buchanan, TMCNP .. Houston

TNLA STAFF

President Amy Graham

Comptroller Jo Tucker

Accounting Assistant Trevor Peevey

Director, Strategic Initiatives Keith McLemore

Communications Manager Anna McGarity

**Director, Legislative and
Regulatory Affairs** Jim Reaves

Education Manager Cameron Hill

**Director, EXPO Operations
& Marketing** Sarah Riggins

Director, EXPO Exhibits Amy Prenger

Exhibits Manager Mike Yelverton

Administrative Assistant EXPO ... Dena Guerrero

**Certification & Membership
Coordinator** Marisol Ybarra

Office Operations Assistant Nancy E. Sollohub

TNLA GREEN STAFF

Editor Anna McGarity

Art Director Marie Leonard

Ad Sales Lance Lawhon

TNLA Green magazine is a member service of the Texas Nursery & Landscape Association, and is published bi-monthly. Advertising information is available from TNLA, 7730 South IH 35, Austin, Texas 78745, online at www.tnlaonline.org, or by calling 800-880-0343. TNLA office hours are weekdays, 8:30AM - 5 PM CST. © 2014 Texas Nursery & Landscape Association



*A Video
Message from
Amy Graham,
TNLA President*

Use Facebook to Stay Connected With Us

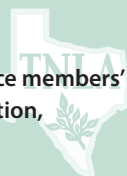


Post to our wall, check out photos, and see who likes what!

► **"Like" Texas Nursery and Landscape Association**

MISSION STATEMENT

The Texas Nursery & Landscape Association's mission is to enhance members' business success through legislative/regulatory advocacy, education, networking, and promotion of professionalism.



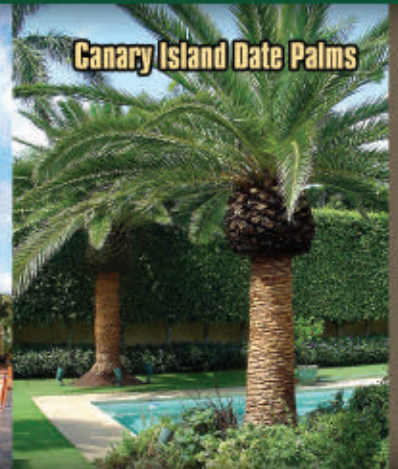
Hundreds of Specimen Medjools, Med Fans, and Canariensis in stock in Alvin Texas



Medjool Date Palms



Specimen Mediterranean Fan Palms



Canary Island Date Palms

AVAILABLE PALMS INCLUDE:

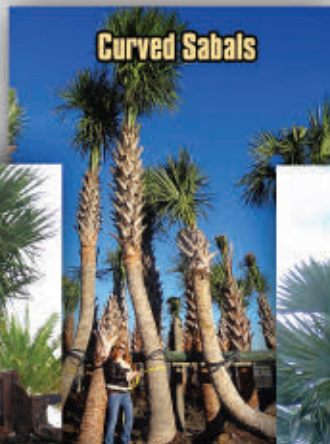
**Australian Fan Palm - Pindo Palm - Ribbon Fan Palm - Sabal Palm
Saribus Palm - Silver Saw Palm - Bismarck Palm - Wild Date Palm
Washingtonia - Windmill Palm**



Classic Cut Pindo Palms



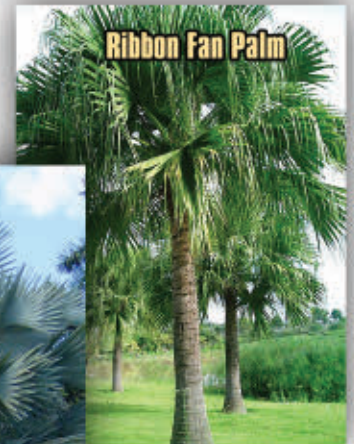
Australian Fan Palm



Curved Sabals



Bismarck Palm



Ribbon Fan Palm

Exceptional Quality - Exceptional Service - Exceptional Results

sales@specpalm.com

800-753-5127

5203 County Road 397
Alvin, TX 77511



www.DatePalm.com



www.SpecPalm.com

TEXAS NURSERY & LANDSCAPE ASSOCIATION

2014

TEXAS

excellence

IN LANDSCAPING

awards



AWARDS DINNER

The **Grand Platinum Award** is presented only when the judges feel there is one project so outstanding that it merits special recognition. Grand Platinum projects may be extremely demanding, unique, challenging, or extremely well executed. The Grand Platinum award can be given in any entry category and is selected from the Gold Award winners.

Award Recipients to be honored at TNLA Awards Dinner in August during the 2014 Nursery/Landscape EXPO.

Purchase a full table for yourself, colleagues, and friends or offer seats to TNLA to be filled by local students, scholarship recipients and/or those interested in the Green Industry. Table sponsors will receive a reserved table for 10 with their company name displayed.

The Texas Excellence in Landscaping Awards program recognizes excellence in installation, design, design/build, maintenance and special projects. This special edition of GREEN features the 2013-2014 TEIL Award recipients who will be honored at the TNLA Awards Dinner in San Antonio, Texas during the 2014 Nursery/Landscape EXPO.

Entries were judged on the basis of difficulty, craftsmanship, and attention to detail, in addition to specific criteria listed in each category. Each of the entry categories was evaluated independently; the type, size, and cost of the project were not criteria for judging.

Congratulations to the winners - see you in August at the TNLA Awards Dinner!

Grand Platinum Award Winner to be unveiled in August at the TNLA Awards Dinner

Visit tnlaonline.org to see all the before and after pictures for each winning project!

Gold Award

AJ'S LANDSCAPE & DESIGN INC. *Rieb Residence*

This home is located inside the 610 loop in Houston. Simplistic Italian architecture won this homeowner over when searching for a home to buy. They wanted to create a dramatic but tasteful landscape/ hardscape design to compliment the architecture of the home. A basic landscape had been installed by the previous homeowner, but it did not compliment the home. AJ's created a design so work could commence immediately following the owner's closing on the house. Front and back landscaping, pool/spa, and patio were all a must. The spa was constructed with slightly beveled stair stepping effect that allows water to dance across its steel gray platform, and the patio provides a whimsical gentle, meandering space in the form of a garden joint. Additional accessories like pottery, grape arbors, and gas lighting were brought in to add the final touches. Judges awarded high marks across the board, earning this landscape a Gold Award!



2014 TEXAS *excellence in* LANDSCAPING

RESIDENTIAL INSTALLATION OVER \$100,000



Gold Award

CLEAN SCAPES, LP *Boot Ranch*

This project's client wanted to create an attractive rustic neighborhood especially for high-end homeowners, as well as weekend visitors. Boot Ranch is an uniquely worthy addition to a beautifully natural setting in Fredericksburg, a small hamlet in the Texas Hill Country. Nestled among 2,000 acres of rolling hills, it is known as a luxury golf community with panoramic views, rustic settings, and colorful native landscaping. The approach to maintaining its current landscaping included the creative diligence by the landscaping management that offers long term solutions to ongoing challenges of heat, drought, and native wildlife. Anchored throughout by Italian cypress trees and live oaks, Clean Scapes used a bright approach to native landscaping. *Salvia greggii*, *bulbine*, orange lantana, Texas mountain laurel, sage, and trailing and upright rosemary were planted or color and sustainability, Mexican feather grass waves throughout the project, adding softness and beauty.



2014 TEXAS *excellence in* LANDSCAPING

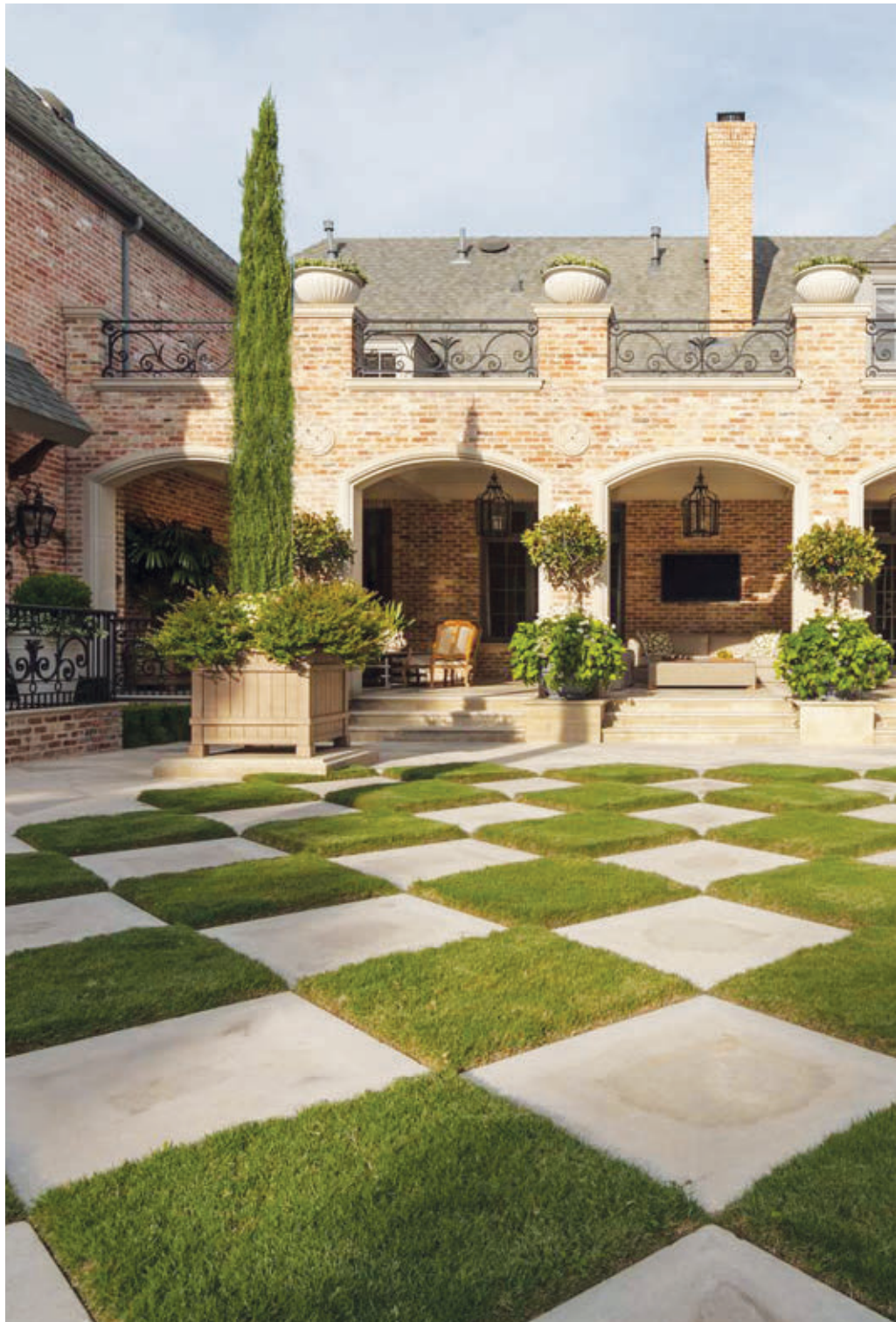
COMMERCIAL MAINTENANCE



Gold Award

LAMBERT LANDSCAPE COMPANY *Classic Contemporary Retreat*

The challenge for this project was to transform an ordinary landscape into an extraordinary resort-feel pool and garden. The client wanted an outdoor space that extended the home's interior into the outdoors and spaces for entertaining. To make the outdoors usable year round, the small terrace was transformed into an expansive loggia. The role of the landscape architect evolved into that of an architectural designer in designing everything from the steel structure (working with a structural engineer) to the detailed coffered ceilings. The design team utilized forced perspective to enhance and enlarge the views throughout the rear garden. Linear pavilions were designed to flank the rectilinear pool, and trees were selectively removed to give glimpses of what lay beyond the back door. Designed, built, and managed by Lambert Landscape Company, the understated beauty of this residential garden can be attributed to the small details while still paying tribute to the existing architecture and land form.



2014 TEXAS *excellence in* LANDSCAPING

RESIDENTIAL INSTALLATION OVER \$100,000



Gold Award

SOUTHERN BOTANICAL *Rose Residence*

This property is managed by professional agronomist, horticulturist, licensed irrigators, certified arborist and a pool/fountain care specialist. A strong understanding of plant pathology, plant health care, soil fertility, turf science, arboriculture and irrigation management is required to maintain the vision of the architect and home owner. As a transitional garden, Southern Botanical worked to provide an ideal micro-climate for the lower garden plants without sacrificing the health of mature trees. A strong understanding of plant physiology combined with strategic planning and implementation is required to manage this garden, which includes a naturally occurring stream, walking paths, a naturally seeded wildflower garden, a wide array of trees and shrubs, and a manicured lawn. As a patron of the arts, the client has a keen eye for design and scale and views their landscape as a work of art.



2014 TEXAS *excellence in* LANDSCAPING

RESIDENTIAL MAINTENANCE



Gold Award

VALLEYCREST LANDSCAPE DEVELOPMENT *Dallas Arboretum*

The Dallas Arboretum Rory Meyers Children's Adventure Garden provides a scenic new location for children (and adults) to learn about and interact with nature. ValleyCrest faced several challenges while constructing the project including procuring more than 57,000 plants in more than 500 varieties from all across the continental United States, and the topography of the site: all soil, trees, shrubs and other materials had to be carefully shuttled down through the sloping (and crowded) site to their designated galleries using smaller equipment and wheelbarrows. But this project had more than just the traditional irrigation, trees and shrubs. ValleyCrest also installed a gazebo LiveRoof, extensive decomposed granite paths, a hedge maze (complete with cor-ten edging), a topiary caterpillar, planted retaining walls, plastic lumber planters, metal trellises, grass pavers and a misting system. The completed project is amazing and well deserving of a Gold Award.



2014 TEXAS *excellence in* LANDSCAPING

Children's Adventure Garden

COMMERCIAL INSTALLATION OVER \$100,000



Gold Award

VALLEYCREST LANDSCAPE DEVELOPMENT *Klyde Warren Park*

Klyde Warren Park is a 5.2-acre vibrant green space built over-top of Woodall Rodgers Freeway. The deck park acts as a connecting space between Uptown and Downtown Dallas. ValleyCrest coordinated with the two general contractors to install irrigation, trees, shrubs, sod, decomposed granite and pre-cast concrete curbs. Great care had to be taken during all excavation work on the site because there is only a thin layer of soil overlaying the structural foam and waterproofing. Special features include: This 'Jane's Lane' which is a tree-lined decomposed granite pathway, dog run area, tons of seating, a Botanical garden and a Children's Park with synthetic turf. All the lawn areas are Tifway 419 Bermuda and p color is added with purple Coneflower, Black-eyed Susan, Texas Sage and other drought-tolerant plants. All the elements came together to make an exception urban oasis and earning a Gold Award!



2014 TEXAS *excellence in* LANDSCAPING

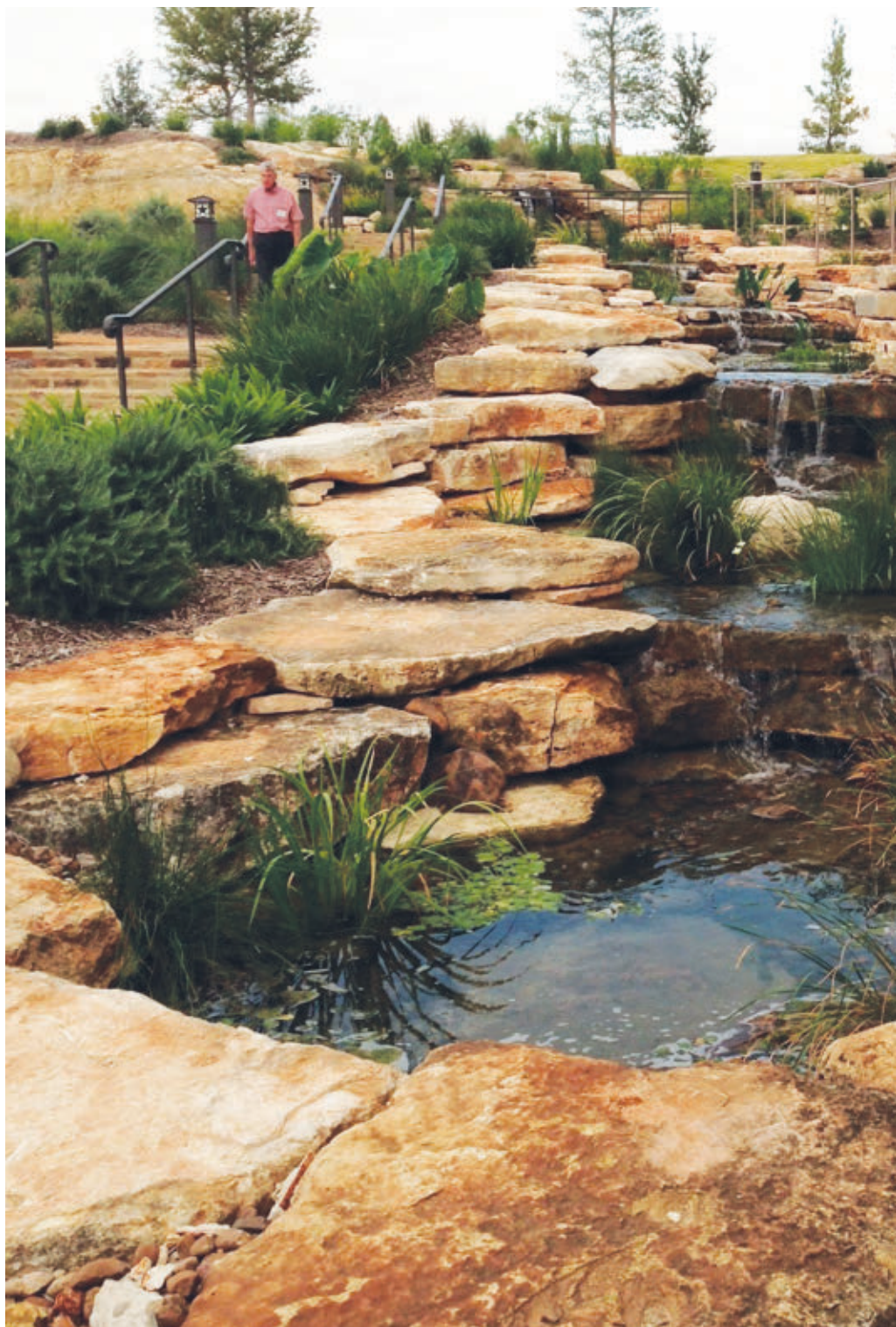
COMMERCIAL INSTALLATION OVER \$100,000



Gold Award

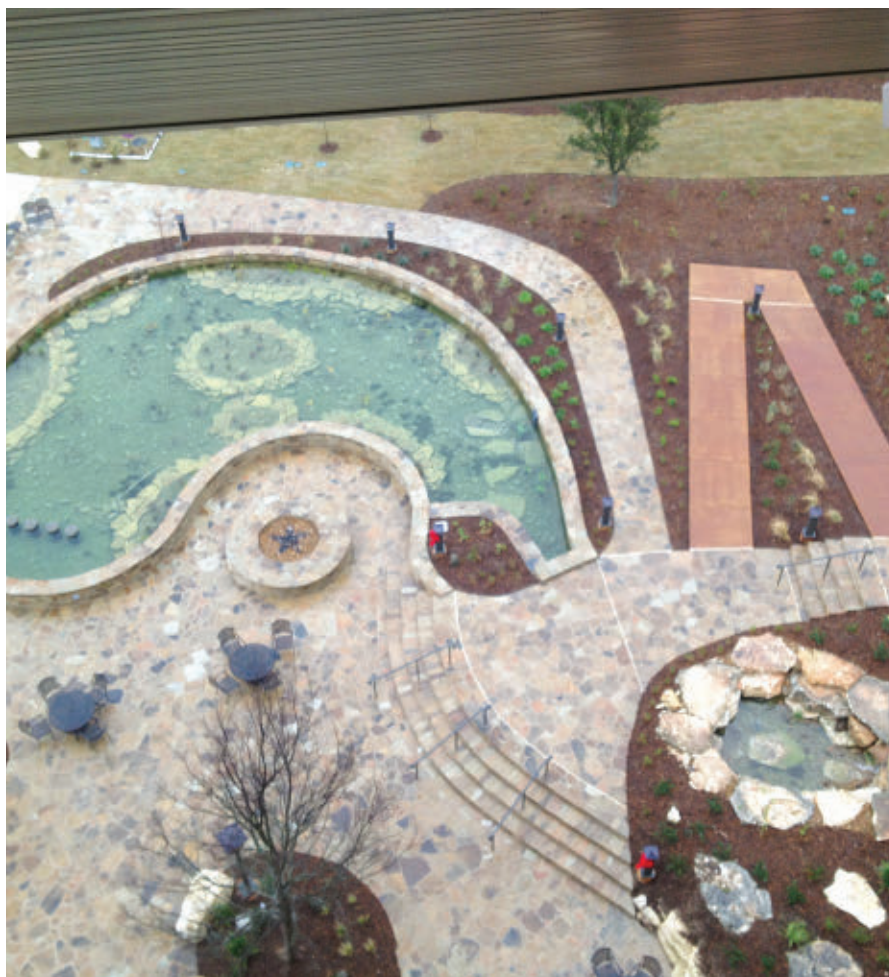
VALLEYCREST *Nustar Energy Campus Water Feature*

When the client selected a hilltop site for the company's new headquarters, he envisioned a water feature resembling the native creeks found crisscrossing the surrounding Hill Country west of San Antonio. The landscape architect took advantage of 35 feet of elevation change and designed a 300-foot long meandering stream carved out of the solid limestone hillside. The final product imitates a natural spring and flows down over 13 individual waterfalls before emptying into a large pond below. More than 100 tons of boulders weighing up to four tons each had to be fitted together to create the appearance of a natural spring-fed creek. The water is 100% supplied by air conditioning condensate (and not subject to San Antonio's water restrictions) and is a functioning eco system with minimal filtration. The finished custom water feature fits in perfectly with the surrounding hill country views and earned its Gold Award beautifully.



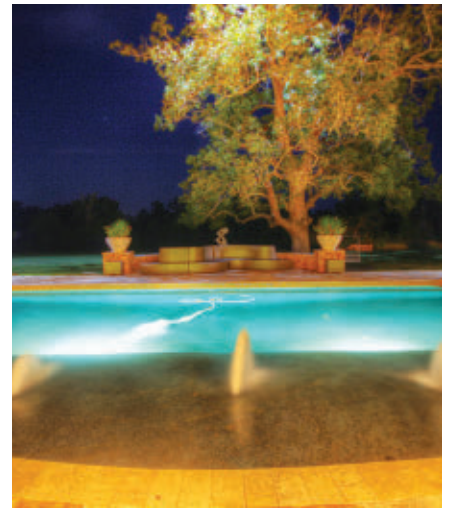
2014 TEXAS *excellence in* LANDSCAPING

SPECIAL PROJECTS



2014 TEXAS *excellence in* LANDSCAPING

Silver Award



ABSOLUTELY OUTDOORS

Jefferson Project

Residential Installation Over \$100,00

Nestled among 16 acres of low lying cotton farmland on the edge of Wharton, Texas, this estate was designed to complement the timeless architecture of Frank Lloyd Wright. Absolutely Outdoors created a plan to design all exterior amenities, including: grand entry with commissioned statue, a tumbled pavestone drive, formal rose gardens, a variety of shrubs and plants to complement the houses' architecture, Zen garden and two new lakes! Transitional walkways connecting the Owner's Casita with the Grand Ballroom beautifully installed using pavers and stained concrete curbing. Finally a stunning pool and Grand Pavilion complete this exceptional project!



2014 TEXAS *excellence in* LANDSCAPING

Silver Award

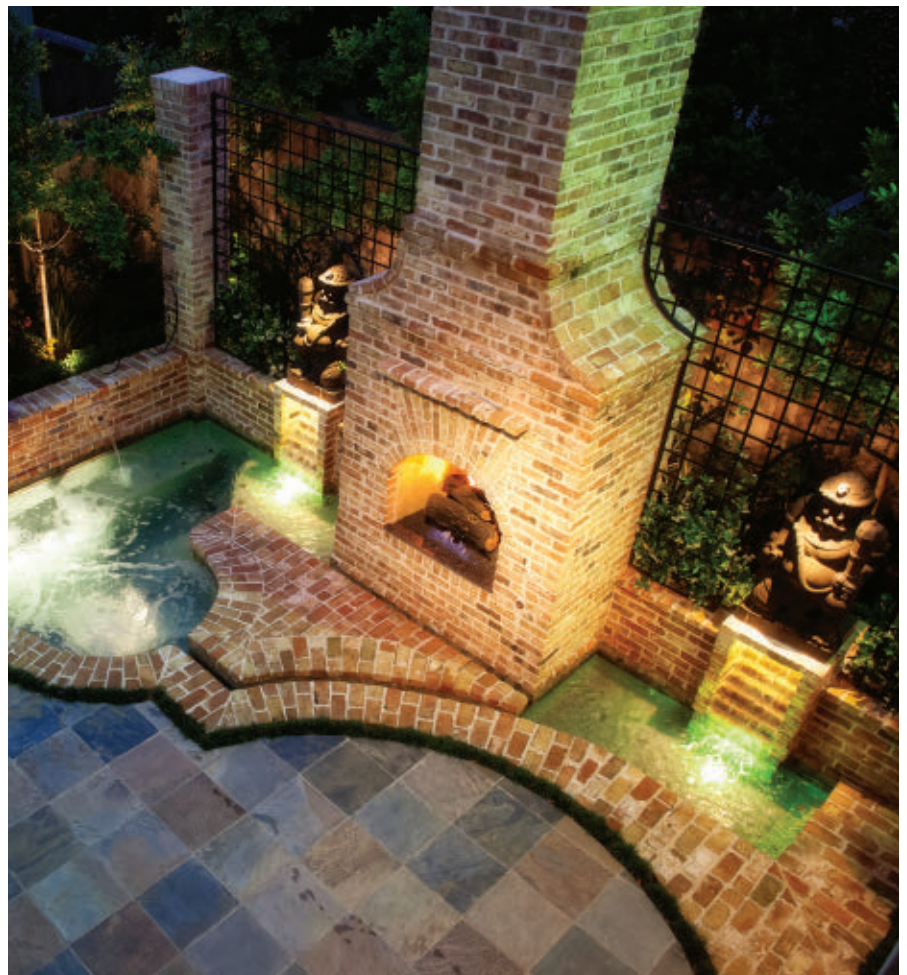


AJ'S LANDSCAPE & DESIGN INC.

McPhail Residence

Residential Installation
25,000 – 100,000

The McPhail residence is located in Houston, Texas' River Oaks. The homeowner had spent ten plus years working in Indonesia before retiring, and they developed a great love for the culture. They decided prior to their departure that they would bring back two 800-pound Balinese temple warrior statues as mementos. The home owner wanted to utilize the pieces, as well as an oversized spa, fire place, patio, and landscape to compliment into their backyard. AJ's created a beautiful and unique solution, turning the once drab backyard into a spectacular reminder of Indonesia right in the heart of Texas.



2014 TEXAS *excellence in* LANDSCAPING

Silver Award



CLEAN SCAPES, LP ***Hill Country Galleria***

Commercial Maintenance

The Hill Country Galleria is a suburban shopping center located in Bee Cave, an affluent community in far west Austin. Clean Scapes continued maintenance and improvement of the property's native appearance, strictly following a natural approach to landscaping, water features and seasonal drought tolerant colorful plants. One of the property's water features is a multi-tiered brook flanked with red sunburst stones, which requires regular attention to keep it clean and active. The variety of mature trees, lawns, shrubs and seasonal color keep Clean Scapes busy and the property beautiful.



2014 TEXAS *excellence in* LANDSCAPING

Silver Award



CLEAN SCAPES, LP *River Place Corporate Center*

Commercial Maintenance

River Place Corporate Park is a Class A suburban office park in west Austin. Purchased in bankruptcy several years ago, the property's landscaping had suffered due to budget constraints and lack of a long-term plan. Clean Scapes remedied the neglect with lots of TLC and professional care; they also converted much of the property into more sustainable landscaping in a relatively seamless fashion using limited resources. A wild riot of color welcomes tenants and visitors like blue plumbago, Pride of Barbados, Texas mountain laurels, new gold lantana, and knock-out roses. The water feature completes the tranquil setting.



2014 TEXAS *excellence in* LANDSCAPING

Silver Award



GREATER TEXAS LANDSCAPE SERVICES

Austin Center

Commercial Installation
\$50,000 - \$100,000

This high rise complex contains an upscale hotel and an office building, which share a common glass atrium. The 3 interior terraces are viewed by hotel guests, as well as corporate tenants, so the owner's decided to upgrade. There was no access except through windows in the complex. The lowest terrace was 15 feet above a hallway, the next level up was the equivalent of 3 stories and the next was another 2 stories! In addition to the access challenges, Greater Texas could only work between 10 am and 2 pm to accommodate hotel guests and had to haul in the 13,000 s.f. of synthetic lawn, 45 tons of gravel after hours. These challenges make the final product of bands of gravel and synthetic turf even more impressive.



2014 TEXAS *excellence in* LANDSCAPING

Silver Award

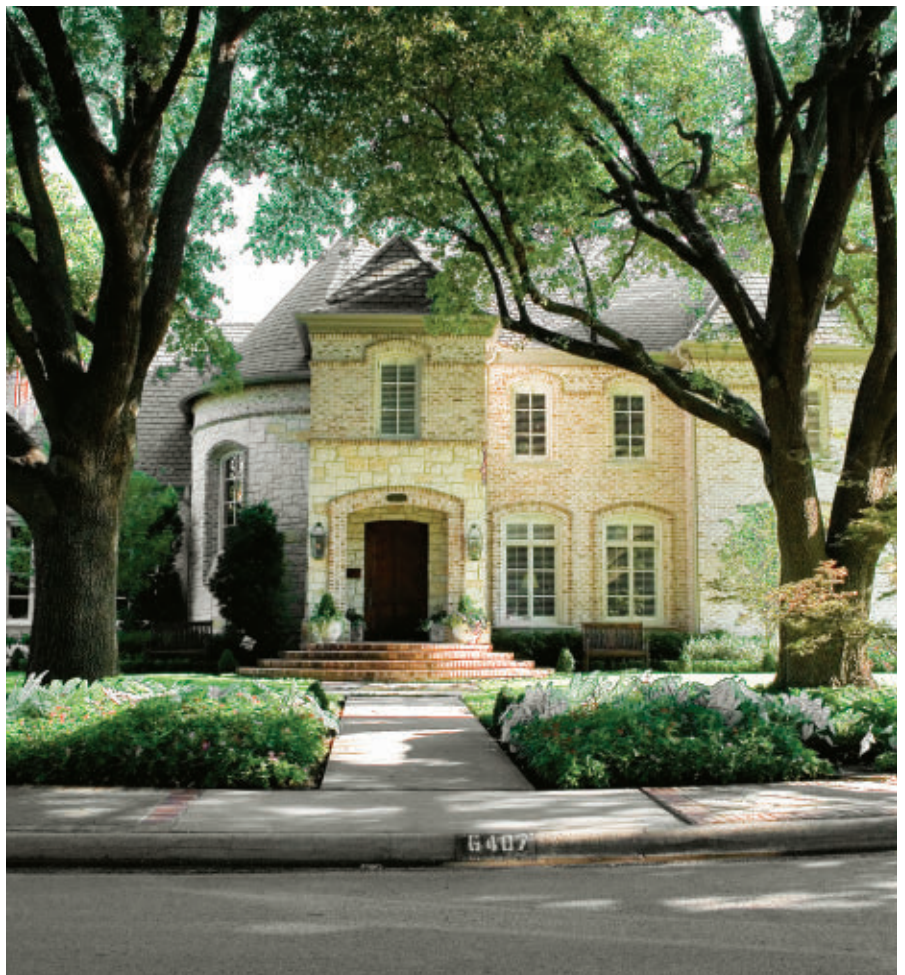


LAWNS OF DALLAS

McCann Residence

Residential Installation
\$25,000 - \$100,000

This project was a complete overhaul of the landscape both in the front and back yards. Lawns of Dallas successfully re-graded and re-sodded the front lawn with Palisades Zoysia gaining lawn space in sunnier areas and eliminating bed space and then doing the opposite in areas with too much shade. They then transitioned from turf to a formal Boxwood hedge lining the beds with softer plantings. In the backyard they lined the beds with formal Boxwoods and added a Riverbirch tree, as well as multiple seasonal color pots around the deck, enhancing the existing pool and adding privacy beautifully.



2014 TEXAS *excellence in* LANDSCAPING

Silver Award



LAWNS OF DALLAS

McEvoy Residence

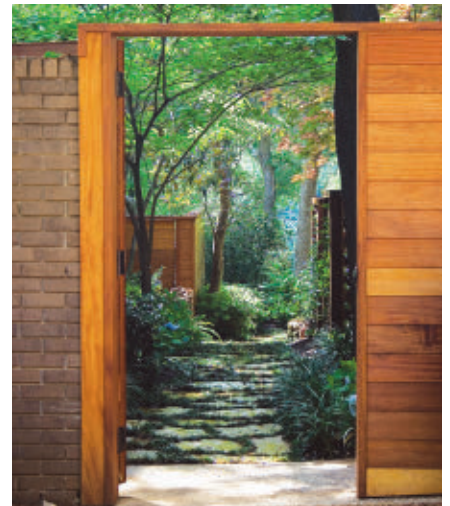
Residential Maintenance

This client really finds pleasure in their garden and outdoor living spaces. The property is filled with several large Red Oak trees and Pecan trees, but the prize to this lot is the large Live Oak anchoring the front East side of the yard. Lawns of Dallas services this property weekly making sure that all turf areas are mowed properly and plants are “hand” pruned throughout, as well as caring for all the trees. The Account Manager visits this property weekly as well, often times twice a week, to ensure any and all details are performed so as to have this house and landscape looking pristine throughout all four seasons of the year.



2014 TEXAS *excellence in* LANDSCAPING

Silver Award



LAWNS OF DALLAS

Bent Tree Estate

Residential over \$100,000

The project's client's particular tastes are of a softer more "Zen" like garden that used elements of existing fountains, retaining walls, pool & pool deck, and artwork. We designed a new decomposed granite driveway, which allow for the large surrounding trees to have more viable space for their root systems, along with a more "eco-friendly" space being more permeable than concrete or stone. They also replaced two old, dilapidated wood decks, as well as a stone patio in the great lawn and a new bocce ball court. The new hardscapes were softened with lots of mature plantings to give the appearance that they had been there for years. The final result was a very soft and ornate garden for the client.



2014 TEXAS *excellence in* LANDSCAPING

Silver Award



METHENY COMMERCIAL LAWN MAINTENANCE, INC.

George W. Bush Presidential Library

Commercial Installation over
\$100,000

This project sits on 23 acres in the center of Dallas, TX. Incorporating native plants and features that optimize water usage, Metheny created a landscape to enhance this impressive Presidential Library. They were responsible for the landscape install, earthwork and water drainage and catchment features that capture enough rainwater to furnish as much as 50% of the water necessary for irrigation of the grounds. Rainwater runoff is filtered and transported for reuse into a 256,000 gallon below grade cistern. They successfully transformed the flat blackland prairie site into a stunning 23 acre Texas hill country landscape.



2014 TEXAS *excellence in* LANDSCAPING

Silver Award



ROUNDTREE LANDSCAPING, INC.

Townhome Residence

Residential Under \$ 25,000

The client called Roundtree with a long list of wants and needs for a small space and with a limited budget – most importantly to fix the drainage since the site held water creating a small lake every time it rained. Both existing decks were fixed with better drainage into “dry creek” beds. The client’s dream was a low maintenance yard. Roundtree’s solution allowed the homeowner to renovate the existing deck so that more resources could be focused on the drainage, site grading, bed preparation and plantings. Overall the final solution has a soft natural feel and works great for the homeowner no matter the weather!



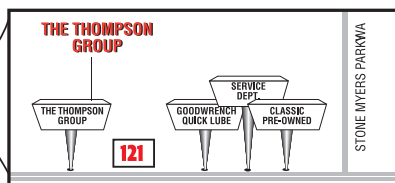
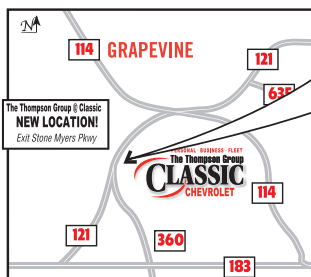
PERSONAL · BUSINESS · FLEET

The Thompson Group CLASSIC CHEVROLET

121 just north of the Stone Myers Pkwy exit

The Thompson Group at Classic Chevrolet is now open at our brand new location on Highway 121 just north of the Stone Myers Pkwy. exit. This state-of-the-art showroom is designed to pamper our customers with every modern convenience and comfort. We have over **2000 NEW CHEVYS** and **500 UPFITTED COMMERCIAL VEHICLES** on the ground with every model available.

Our new facility features a dedicated service department, parts department and Quick Lube facility on-site. The service department can accept any GM vehicle and is highly specialized in servicing commercial vehicles, with the addition of six super sized 28' bays. The Thompson Group's GM certified technicians are also specifically trained to service medium duty commercial trucks and up-fitted work vehicles. Contact your personal Service Advisor directly at 817-410-6121 for all your service needs.

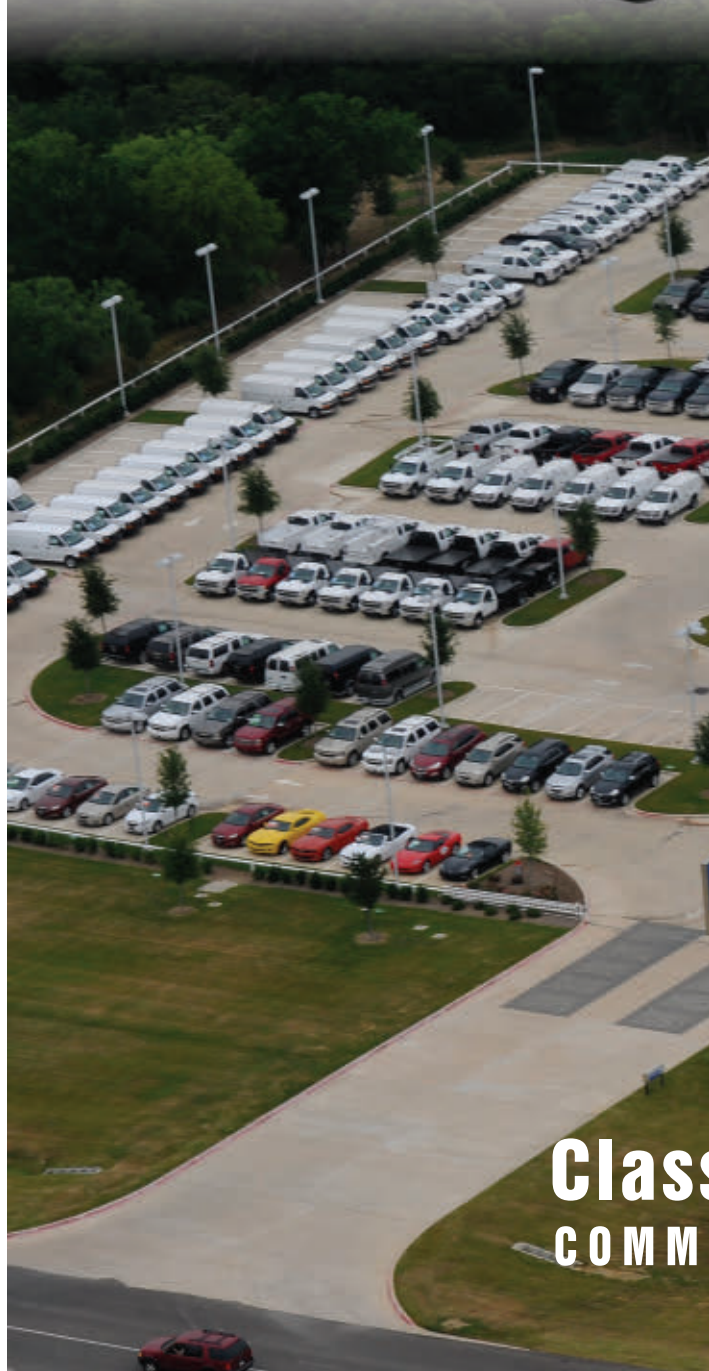


**121 just north of
the Stone Myers Pkwy exit**
metro **817-410-1560**

FIND NEW ROADS™



THE LARGES GROUP OF IT



**Class
COMM**

T FLEET AND COMMERCIAL S KIND IN THE NATION



ClassicFleet.com
COMMERCIAL • FLEET • CREDIT UNION



2014 TEXAS *excellence in* LANDSCAPING

Silver Award



SOUTHERN BOTANICAL

Royal Oaks Country Club

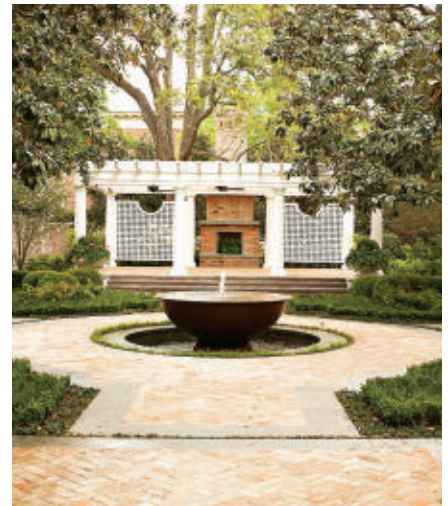
Commercial Installation
Over \$100,000

This project was a complete pool and tennis court renovation for a country club in Dallas, TX. The client's goal was to transform the existing two, 20-year-old pools and thirteen tennis courts into a modern, four pool complex. The renovation includes a new subsurface drainage and irrigation drip system, 13 eight-foot caliper Live Oak and Cedar Elm trees, and two custom jet water features that stream into the beach area. Ipe and Cumaru wood, leuder limestone and charcoal grey concrete create contrasting surfaces. Over the course of seven months the space was transformed, fulfilling the client's goal of creating functional outdoor tennis and pool spaces perfect for pampering their members.



2014 TEXAS *excellence in* LANDSCAPING

Silver Award



SOUTHERN BOTANICAL

Park Cities Estate

Residential Installation
Over \$100,000

The client's goal for this project was to achieve complete privacy for three new unique garden spaces.

The finished project includes a new putting green, antique brick walkway, new fireplace, an antique brick screen wall, and arched gate entry completed with a hanging gas lantern. Additionally Southern Botanical installed a 14'-16' Yaupon holly, Fourteen 16' Magnolias and Ten 20' Nelly R. Stevens hollies and a 22' Live Oak that, as well as transplanting five 16'-18' existing Japanese Maples— all installed by hand! Following six months of construction the result is a serene retreat for the client beneath the shade of their irreplaceable trees.



2014 TEXAS *excellence in* LANDSCAPING

Silver Award

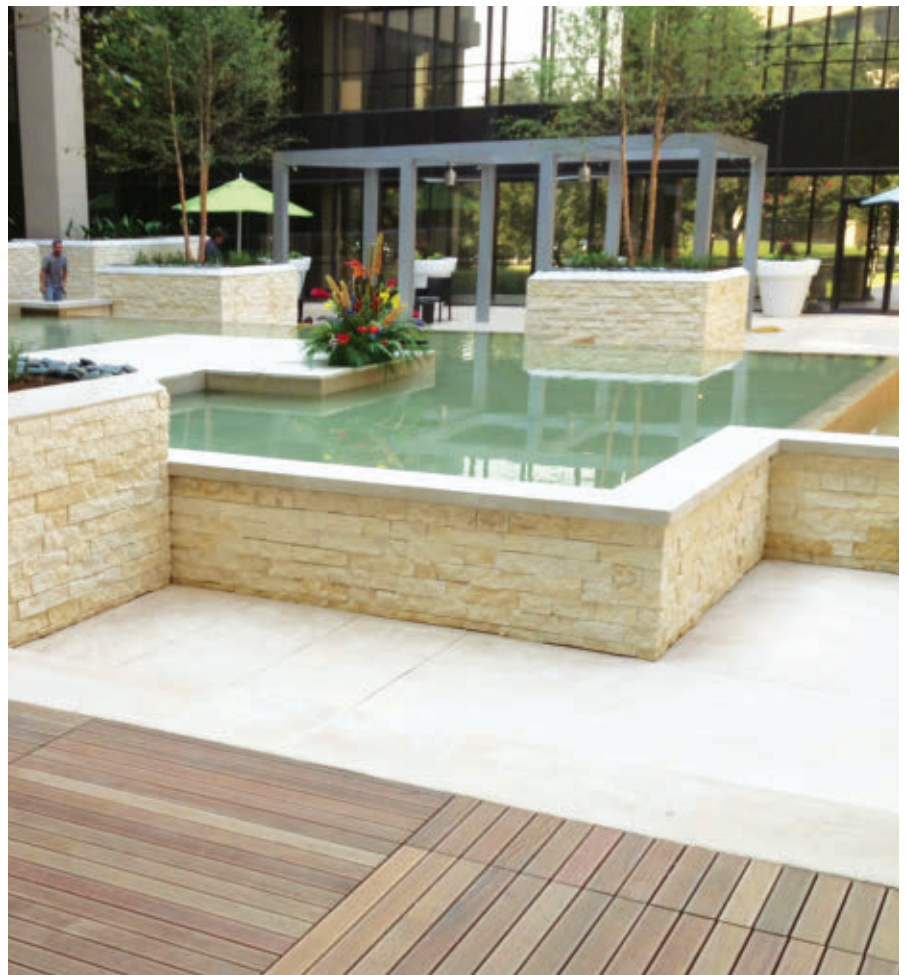


SITE PLANNING SITE DEVELOPMENT

290 John Carpenter Courtyard Renovation

Special Projects

This courtyard renovation project was intended to spark new interest from possible business tenants to a building that was vacant for nearly seven years. Site Planning Site Development installed the 2,300 square foot Koi pond with its 12 foot tall natural stone faced water wall that is up lit with LED light fixtures, creating a calming and inviting sound as water spills over. The courtyard includes complete landscape lighting in the planters, lit planter pots, as well as perimeter and trellis structure dimmable lighting. This courtyard renovation helped the client secure tenants over the next several years and offers them a serene sapce to enjoy.



2014 TEXAS *excellence in* LANDSCAPING

Silver Award



VALLEYCREST LANDSCAPE MAINTENANCE *Research Park Place*

Special Projects

The client for this project manages a building whose owner signed a ten year lease with the FBI with the inclusion that a “barrier” to prevent a vehicle coming within 20 feet of the building. To accomplish this, the owner had imported forty 4’x4’x3’ limestone blocks and had placed them on the outskirts of the available parking spaces that face the building rendering the parking spaces as unusable.

ValleyCrest’s design included a bold move to convert the entire space into a live planter, utilizing chopblock and mortar to adjust the grade and xeriscaping to conserve water. Despite many challenges, the final project is a deceptive beauty.



2014 TEXAS *excellence in* LANDSCAPING



Bronze AJ'S LANDSCAPE & DESIGN INC. Vickery Residence



Bronze CLEAN SCAPES, LP Research Park Plaza, Buildings III & IV



Bronze GREATER TEXAS LANDSCAPE SERVICES 816 Congress Terrace

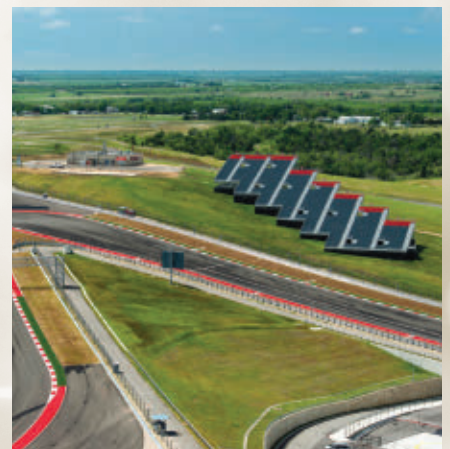
2014 TEXAS *excellence in* LANDSCAPING



Bronze SITE PLANNING SITE DEVELOPMENT *TRT Holdings Headquarters*



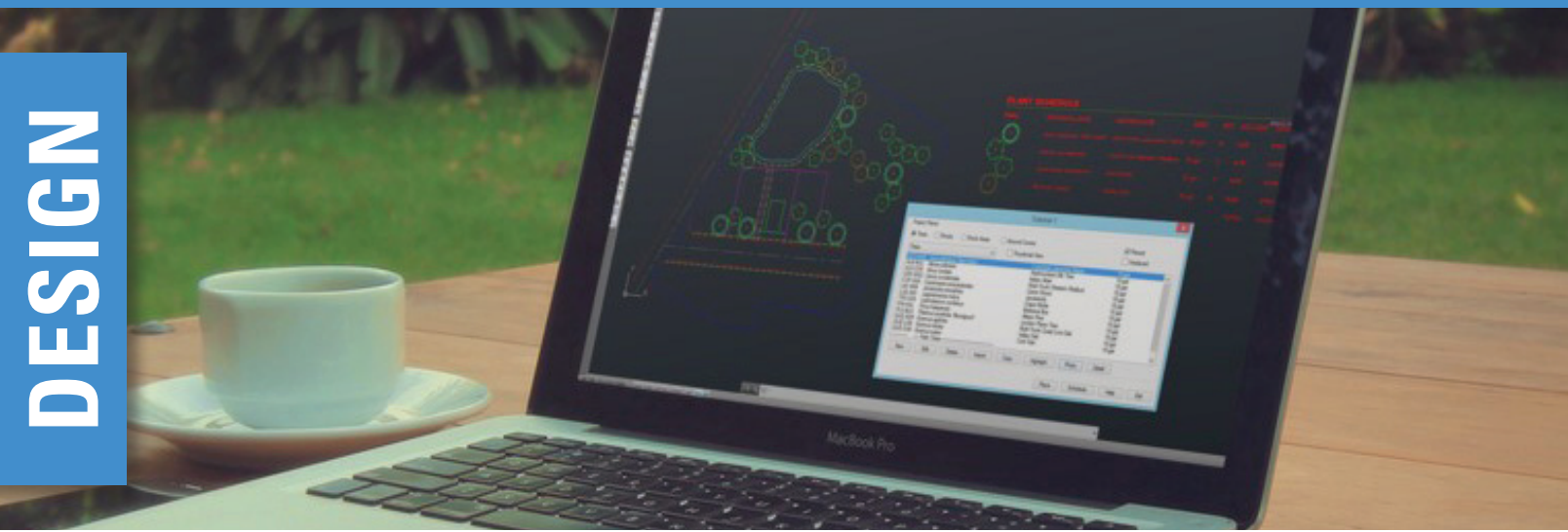
Bronze SOUTHERN BOTANICAL *Katy Trail Outpost*



Bronze VALLEYCREST LANDSCAPE DEVELOPMENT *Circuit of The Americas*



DESIGN



PURCHASE



SELL



LOCALPLANTSOURCE

YOUR TRUSTED TECHNOLOGY PARTNER

2014 TEXAS *excellence in* LANDSCAPING

Honorable Mentions

ABSOLUTELY OUTDOORS
Santamaria Residence

ABSOLUTELY OUTDOORS
Wagner Residence

AJ'S LANDSCAPE & DESIGN INC.
Heights Retreat

CLEAN SCAPES, LP
Silverado at Brushy Creek

CLEAN SCAPES, LP
Southpark Meadows

GREENER PASTURES LANDSCAPE
Dallas Presbyterian Hospital

GREATER TEXAS LANDSCAPE SERVICES
Tarry House

SUNSCAPE LANDSCAPING
Serene Hills HOA (maintenance)

TIPS FOR WINNING ENTRIES!

The Texas Excellence in Landscaping Awards judging panel is composed of Texas judges who are experts in regional conditions and landscaping feats meriting distinction, thus elevating the criteria for winning submissions to a standard higher than many other awards programs. Judging is done in the blind and entries are judged on their own merits. Texas Nursery & Landscape Association has compiled tips and comments from judges over the years to provide easy, do-able actions for this elite awards program.

The quality and variety of your photos are central to the evaluation process. Your photo descriptions are read aloud to the judges as they examine the photos, so use descriptions to direct attention to the extraordinary features of your project. Take pictures specifically for the judges, don't just use photos you already happened to have. Make sure the photos show what you want to describe; take a picture to define your description, not the other way around.

Providing an overall shot gives the judges a sense of context; the subsequent detailed shots will make more sense if judges have a sense of the space. For installation entries, "before" shots are just as important as "after" shots. Take photos at each phase in the process— before, during, and after. Take photos from the same angles, particularly for wide shots, to show a sense of the transformation that has occurred. For a design entry, take photos when flowers are in bloom, and/or in different seasons to show variety in color. For a maintenance entry, take photographs 2-3 days after mowing, when it still looks pristine but not as "scorched" as immediately afterward.

Time of day matters; photos look different at different times. They also look different if you take them on sunny versus cloudy days. Typically, the best times are early morning or just before sunset on overcast days, but use your judgment and pick the time that makes your project look the best.

Remember that you are telling the story of your project through 15 photographs and photo descriptions. Each image is an opportunity to show how your project meets the judging criteria, and each image description is a chance to explain to the judges what you've accomplished. ☺

JUDGING CRITERIA

Installation Categories:

1. Degree of difficulty
2. Quality of plant material (i.e. seeded or sodded lawns, shrubs, trees, plants, construction)
3. Attention to detail
4. Overall finished appearance (i.e. site grading)
5. Special features (i.e. ponds, paving, fountains)

Maintenance Categories:

1. Integrity of lawns (i.e. clear, careful mowing pattern, lush look without rutting)
2. Condition of trees and shrubs
3. Condition of planting beds (i.e. weed free, edge detail, condition of plant material, bed detailing)
4. Health & vitality of overall project
5. Attention to detail
6. Degree of difficulty

Special Projects:

1. Overall appearance
2. Degree of difficulty
3. Attention to detail
4. Quality of plant material
5. Quality of installation
6. Unusual or unique material used
7. Appropriateness to function

Texas Superstar® Prom

The Texas Superstar® Executive Board is excited to announce the promotions planned for 2014. A Texas Superstar® promotion includes a news release that goes out to over 2000 media outlets and contacts and is picked up by many newspaper garden sections, magazines and other publications or news media outlets statewide.

In addition, County Horticultural Agents across the state promote these plants via local news media. Texas Superstar® plants are usually identified with the Texas Superstar® logo on plant tags in retail outlets. The logo can be placed on any type of tag and the sale of these tags provides revenue to support the trials and development of future promotions. See www.TexasSuperstar.com for more information on all aspects of the program. The Texas Superstar® Program has also partnered with the Texas Department of Agriculture's Go Texan® Program (<http://www.gotexan.org/ExperienceGOTEXAN/TexasSuperstars.aspx>). A new brochure has been recently published in cooperation with TDA and TNLA that includes all the promotions that are current as well as the 2014 designees. QR codes that link to individual plant pages on the Texas

Superstar® website have also been included in the brochure and can be used on tags as well. The brochure can be downloaded at either of the websites listed above. Or you can contact TDA for information regarding hardcopies of the brochure for distribution by wholesalers or retailers.

Tycoon Tomato

(March 2014)

***Solanum lycopersicum* 'Tycoon'**
Tycoon is an exceptional large round tomato variety. The plant is determinate and is known for its heat setting ability as well as its resistance to tomato yellow leaf curl virus. This particular virus has become a major problem in the fall the past few years as the virus is transmitted by white flies which have become worse due to the serious drought conditions across most of the state. In addition the plant is resistant to

Verticillium, Fusarium races one and two, tomato spotted wilt virus as well as nematodes. The fruit is firm and actually more oblate than round.

Exposure: full sun for optimum production

Height: Three to four feet high and two to three feet wide

Plant type: annual but determinate

Planting time: In early spring after the danger of frost has passed and in the summer 80 to 90 days prior to the first freeze in the fall; best to use high quality transplants. If seed is used it should be started 6 to 8 weeks prior to the planting date.

Soil type: numerous as long as well drained.

Suggested uses: For the garden or commercial planting.

Ornamental Pepper Purple Flash

(April 2014)



***Capsicum annuum* 'Purple Flash'**

An exotic looking ornamental pepper

with leaves that are almost black and overlaid with splashes of dark purple and white. Fruit are small and secondary to the foliage for display.

Exposure: full sun to partial shade

Height: 12-15 inches

Brent Pemberton, Professor, Texas A&M AgriLife Research

Larry Stein, Professor, Texas A&M AgriLife Extension Service

Dan Lineberger, Professor, Texas A&M University Department of Horticultural Sciences

Cynthia McKenney, Professor, Texas Tech University Department of Plant Sciences

David Rodriguez, County Agent Horticulture Bexar County, Texas A&M AgriLife Extension Service

Mike Arnold, Professor, Texas A&M University Department of Horticultural Sciences

Tim Davis, Professor, Texas A&M University Department of Horticultural Sciences

Options For 2014

Plant type: annual

Planting time: spring

Soil type: will grow in most well drained soils and in a variety of potting mixes

Suggested uses: a great vegetable to mix in flower borders, use in mass plantings, or in containers

Special notes: Plants are heat and drought tolerant. Fruit are extremely hot to the taste.

Satsuma Orange Frost



(early May 2014)

Citrus reticulata

Orange Frost Mandarin hybrid is a cross between a very seedy, but cold hardy Changsha tangerine and a very high quality Satsuma. The fruit is very sweet, easy to peel and only has one or two seeds per fruit. More importantly the tree has more cold hardiness than Satsuma; hence once established it will tolerate more cold than satsumas meaning they can be pushed a bit north.

Exposure: minimum of 8 to 10 hours of sun per day.

Height: Eight to ten feet high and wide in the ground; four to six feet in containers.

Plant type: evergreen citrus tree.

Planting time: early spring after the danger of frost has passed.

Suggested uses: accent plant for backyard and potential patio containers.

Special notes: This Texas Superstar should expand the planting zone for citrus in the ground moving as far north as zone 8. Some protection will be required in the establishment phase. Trees will be

on their own roots and will come back true if frozen back. The tree will also work well in containers. Adequate fertility and a well-drained potting soil are a must in containers. Amend the mix with slow release fertilizer and water once a month with a water soluble fertilizer.

Fall Zinnias Including Marylandica Types

(early September 2014)

Zinnia marylandica, *Zinnia hybrid*, and *Zinnia elegans*

The Profusion and Zahara series of zinnia produce disease resistant mounds of color that last until frost when planted in late summer. The more traditional flowers of the Dreamland and Magellan series can also be enjoyed at this time of year while avoiding many of the disease



issues that can show up in the spring. All have vibrant colors with the cool nights of fall on sturdy compact plants.

Exposure: full sun

Height: 12-18 inches

Plant type: annual

Planting time: late summer to early fall

Soil type: Adaptable to soil type if well drained and a variety of potting mixes

Suggested uses: mixed borders, mass bed displays, and containers

Special notes: Very heat tolerant.

Do not overwater. More vigorous cultivars are a better choice for short season areas such as the High Plains. ☺





Lo & Behold® 'Blue Chip Jr.' *Buddleia*

A little smaller than the original 'Blue Chip', Junior also has attractive silver-green leaves and is less brittle. Like all Lo & Behold® *Buddleia*, it's dwarf, non-invasive, and continuous blooming for months of easy butterfly fun!

Spring Meadow Nursery is your liner source for all 200+ Proven Winners shrub varieties. Call Jodi today to add these profitable new plants to your production plans.

Jodi Griffin, 616-223-3364

www.springmeadownursery.com

800-633-8859



www.livingearth.net

EXCEEDING EXPECTATIONS ALL DAY LONG



Consistent, Reliable Results from Top-Shelf Materials

8 DFW LOCATIONS
CALL: 972-869-4332

12 HOUSTON AREA LOCATIONS
CALL: 713-466-7360

The Quarterly Quiz - a CEU Opportunity

Each quarter, TNLA publishes an article and a quiz. Those holding TCNP, TCLP, TCLA, or TMCNP certifications can complete the quiz and return it to TNLA to earn 1 CEU credit. The quiz for this quarter can be found on page 57. Fill in the quiz and return to TNLA according to the instructions on that page.

Basil Downy Mildew

by Dr. Mengmeng Gu and Dr. Kevin Ong, Texas A&M AgriLife Extension Service, College Station, TX

Introduction:

There has been increasing popularity of using herbs in cooking and homeowners' gardens, and basil ranks the first in terms of production and consumption, among many available herb species. Commercial basil production increased significantly. The top four states are California, North Carolina, New Jersey and Florida. A total of 2,053 U.S. farms produced herbs for the fresh market in 2007 on 13,573 acres of land, which represents an increase of nearly 25% in the five years since the last agricultural census in 2002. The same is true for basil grown in homeowners' gardens, as the trend of growing edible plants has become increasingly popular.

There are many types of basil. The genus *Ocimum* encompasses 35 species of annuals and perennials from the tropical and subtropical areas. Sweet basil (*O. basilicum*) is the most common species cultivated for culinary and ornamental uses, and there are about 100 cultivars. Certain cultivars are more favored than the others in some areas, hence the names of 'Italian basil', 'Greek

basil', and 'Thai basil', etc. These are not particular basil cultivar names. 'Genovese' is probably the most popular basil cultivar in both commercial production and homeowners' gardens.

With the increasing commercial production areas and popularity of basil plants among homeowners across the United States, basil downy mildew, a severe disease that is caused by *Peronospora belbahrii* and could cause 100% crop loss, has spread to about 40 states since the first report in the United States (South Florida) in the fall of 2007. The earliest report of basil downy mildew in Texas was in 2010. Many herb growers are still unaware of the existence of this disease problem, not to mention taking preventative measures.

Symptoms and Transmission:

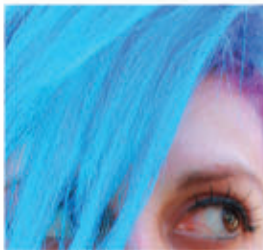
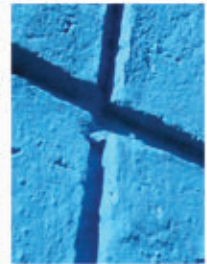
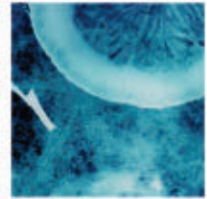
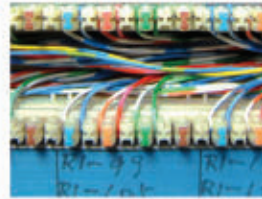
Symptoms of basil downy mildew could be mistakenly considered as nutrient deficiency. The affected plants may show general yellowing and different levels chlorosis (yellowing) of lower older leaves, which is common in plants with N deficiency. However, chlorosis caused

by nutrient deficiency is not vein-bounded, while close inspection of yellowing of basil leaves with downy mildew, especially those in more advanced stage, could generally identify the vein-bounded pattern. Entire leaf could show yellowing symptoms. When looking at the underside of the affected basil leaves, there may be sporulation

(continued on page 47)



Do you have
a favorite
Cyan image?*



Hassle-free printing

5,000 postcards \$149
10,000 flyers \$349
1,000 magazines \$995
(16 pages, 60# paper)



**SHWEIKI
MEDIA**
SHWEIKI MEDIA PRODUCTIONS, LLC

*Visit your new favorite printer and upload your cyan inspiration: pinterest.com/shweikimedia/cyan
For free samples or a quote, call (210) 804 0390, or email samples@shweiki.com

We have the national landscape covered.



Target Specialty Products is one of the largest
wholesale distribution networks, coast to coast.
We provide specialty agricultural and pest control
chemicals to any business, anywhere in the U.S.,



large or small, with same day/next day service.
Our experienced and highly trained staff can help
you to better serve your customers.
Contact us today.

Fumigation | Golf Courses | Landscape | Nursery | Pest Control | Vector | Vegetation Management

(continued from page 45)

evidenced by gray, fuzzy appearance. When grown under high humidity conditions, the yellowing areas of affected leaves could turn darker very quickly, yielding necrotic leaf tissues. Sporangia, produced on tips of sporangiophores emerging through stomata of infected plant leaves, could be easily detected under a microscope. The sporangia and stag horn-shaped sporangiophores are diagnostic for this disease.

The disease is favored by cool to warm temperatures and humid conditions, and can be spread through infested seeds, infested plants, or wind-spread sporangia.

Management:

There are very limited resistance cultivar selections for commercial sweet basil producers. Almost all popular commercial sweet basil cultivars are among the most susceptible to downy mildew, including Amethyst Improved, Aroma 2, Gecofure, Genovese, Genovese Martina, Italian Large Leaf, Magical Michael, Mariden, Nufar, Opal Purple Variegated, Poppy Joe's, Queentette, Red Rubin, and Superbo. Symptoms and sporulation of basil downy mildew on lemon basil, *O. citriodorum* (standard, 'Mrs. Burns', and 'Lemona'), and *O. americanum* cultivars ('Blue Spice', 'Spice' and 'Lime') were present but far less than on most *O. basilicum* cultivars evaluated. The cultivars Spice, Blue Spice, and Blue Spice F 1 were the least susceptible to basil downy mildew with no visible symptoms (read the full research report of Wyenandt et al. 2010. Susceptibility of Basil Cultivars and Breeding Lines to Downy Mildew (*Peronospora belbahrii*). HORTSCIENCE 45(9):1416–1419). The market of the more resistant species and

Trade Names and Active Ingredients of Some Products Labeled For Use Against Basil Downy Mildew.

TRADE NAME	ACTIVE INGREDIENT	LOCATION	OMRI
Actinovate AG	<i>Streptomyces lydicus</i>	NA	Y
Double Nickel 55	<i>Bacillus amyloliquefaciens</i>	NA	Y
MilStop	Potassium bicarbonate	I/O	Y
OxiDate	Hydrogen dioxide	I/O	Y
Regalia	Extract of <i>Reynoutria sachalinensis</i>	I/O	Y
Trilogy	Neem oil	NA	Y
Armcarb	Potassium bicarbonate	I/O	N
ProPhyt, Fosphite, Fungi-Phite, Rampart, and K-Phite	Phosphorous acid	I/O	N
Quadris/ Heritage	Azoxystrobin	O	N
Ranman *	Cyazofamid	I/O	N
Subdue MAXX	Mefenoxam	I/O	N

"I" = greenhouse; "O" = open field

The information given herein is for educational purposes only. References to commercial products or trade names are made with the understanding that no discrimination is intended and no endorsement by Texas A&M AgriLife Extension Service personnel is implied.

cultivars is very limited. However these more resistant species and cultivars could be good alternative for home gardeners.

A good culture practice to prevent basil downy mildew is to reduce humidity (under greenhouse conditions) and leaf wetness. Since basil downy mildew could be spread through air borne sporangia, regular monitoring through scouting should be a priority for growers, especially in areas where the pathogen has been identified. Identifying infested plants and removing infested and potentially infested plants at the earliest stage could potentially prevent growers from losing the entire crop.

Prevention is the key for the management of basil downy mildew. Application before the first sign of downy mildew symptom is critical to suppress the pathogen effectively. Many currently labeled fungicides have limited control after symptoms become visible. Chemicals labeled for downy mildew on basil or herbs in general are listed in the table. User should consult label for application site and use as some may not be suitable for production of basil for food use. In addition, product such as Ranman are available to growers in some state under the Section 18 Emergency Exemption use (label of this product should be consulted to ensure legality of use. ☺

Newsbites

Catching Up With an E&R Foundation Scholarship Recipient

LAUREN ROBINSON is midway through her second semester of graduate school at Texas State University where she is working



towards her Master's degree in Agriculture. She earned extremely high grades and was

in the Honor Society while an undergraduate at Sam Houston University before graduating in May of 2011, which was one of the reasons that she earned a scholarship from the E&R

Foundation. That and the fact that she was very involved in horticulture outside of the classroom, including being a member of the Horticulture Club, The Austin Turf Association, PLANET and TNLA! On top of all of that, she gives back to her community by volunteering at Dell's Children's Garden.

As Lauren puts it, while at Sam Houston she "developed a passion for the Green Industry." After graduation she went to work at Magnolia Gardens in Sales and Inventory where she oversees purchasing accounts for HEB's live

goods, among other tasks. In June of 2013 she began working for John Deer Landscapes as the Texas' Inside Sales Associate where she plans Texas events, promotions and marketing throughout the year.

Because of Lauren's academic achievements, her love of the industry, and her strong work ethic - we know she has what it takes to go far in her field. When asked what she hopes to gain from earning her master's degree, she says, "To be a positive advocate for the Green Industry, and most of all to be a leader with a passionate purpose." We think she is well on her way! ☺

INTRODUCING Arbor-OTC™ INJECTABLE TREE ANTIBIOTIC!

Arborjet brings together the latest technology and formulations to control bacterial diseases in non-food-bearing trees and palms.

Treats diseases such as:

- Phytoplasma Disease
- Bacterial Leaf Scorch
- Fire Blight
- Lethal Decline
- Vascular Yellows
- Wetwood/Slime Flux



Visit www.arborjet.com or call 781.935.9070.

ARBORjet
Revolutionary Plant Health Solutions

GreenVi\$ion

In Defense of Turf

by Mengmeng Gu, Ph.D.



Mengmeng Gu, Ph.D. is an Assistant Professor/Extension Specialist at TAMU. She received her BS in landscape horticulture and MS in ornamental horticulture from Beijing Forestry University

We'll focus on the third aspect of seven Earth-Kind landscape principals in this article:

- Planning and design
- Soil analysis and preparation
- **Practical turf areas**
- Appropriate plant selection
- Efficient irrigation
- Use of mulches
- Appropriate maintenance.

Texans love their lawns! You can find as many 'lawn huggers' here in Texas as tree huggers somewhere else. I love the lawn in my backyard, and my two boys could run around, play soccer or simply just "exercise" by pushing the lawn mower. I have a special feeling about lawns. When I was a college student of Ornamental Horticulture in Beijing, China, we had lots of field trips to public parks. All parks had signs on lawns like 'please don't step on the lawn' or 'please respect the grass and take a detour'.

The lawns are for people to look at, but not to enjoy. You could imagine what a 'culture shock' I had when I could walk or have a picnic on the soft lawn in the United States.

When we bought our first house in Mississippi and my husband started his only 'outdoor exercise' (mowing grass) we had our first taste of the price that we had to pay for the half acre of lawn that we don't get to enjoy as often as we'd like. Everyone in my family is a mosquito magnets and the mosquitos in my backyard, or even my neighbors' backyard, all had free 'Chinese buffet' before we stopped spending so much time outside.

When we bought our second house in College Station, the lot was only half the size but the water bill was twice as much during the summer time. To keep the mosquitos from taking advantage of free 'Chinese buffet', we spent even less time outside. It was a lot of money to spend on watering and time on mowing, for the little time we could enjoy on the lawn.

I started to think about a 'practical turf area' for my backyard. I wished I could convert most of my lawn to flower beds. Many homeowners may have had such thoughts like mine. However, they haven't been able to put it into action, due to home owner associations (HOAs) restrictions... until now. Governor Perry signed legislation early this year to keep HOAs from banning water-efficient landscaping. Last month, I visited a master gardener's landscape, where there is little lawn in either front or backyard. It was beautiful, with lots of



Trees and shrubs could provide cooling effects through shading, with minimal water loss and mulching reduces soil water evaporation.

(continued on page 50)

(continued from page 49)

plants of various color, texture, and fragrance.

Nobody could deny that lawn has many benefits to the environment. It increases air humidity, decreases air temperature during the hot summer, assimilates CO₂ and releases O₂, among many other benefits. I have had many 'friendly' debates on lawn's environmental benefits when preaching 'practical turf areas'. These benefits are mainly results of two plant physiological processes: transpiration and photosynthesis. All landscape plants have these two functions, and thus such environmental benefits. The price of such benefits is mainly water----plant roots suck up water from soil, water is transported to leaves, and then lost to the air when stomates (tiny opening on leaves) open to 'suck in' CO₂ for photosynthesis. Such water loss is the main cause of

increased air humidity and decreased air temperature, which is similar to water evaporating from concrete floor. Plants' capacity of increasing air humidity and decreasing air temperature is a function of water loss. The more water loss through plants, the more effects of humidifying and cooling. Landscape

plants (including turf grass) may vary in their efficiency of utilizing water in this way.

Trees and shrubs in the landscape have another way of cooling that turf grasses don't ----shading. In nursery production, it's a common practice to use shade cloth to reduce



A front yard with minimal lawn full of plants of different color, texture and fragrance.

THE LANDSCAPE SUPPLY COMPANY



AUSTIN

12550 Harris Branch Parkway • Manor, TX 78653-3752
Phone [512] 278.0997

DALLAS/FT WORTH

521 Huffines Boulevard • Lewisville, TX 75056-9552
Phone [972] 939-1144

HOUSTON

3802 Barker Cypress Road • Houston, TX 77084-3931
Phone [281] 398.3040

Shemin
THE LANDSCAPE SUPPLY COMPANY™
WWW.SHEMIN.NET
WWW.CHOICETURF.NET

QUALITY. VARIETY. AVAILABILITY. SERVICE.

**For more than fifty-five years,
we've helped our customers grow
by providing the highest quality, most variety,
greatest availability and best service
in the landscape industry.**

Come see how we can help you grow.

**NURSERY · ANNUALS/PERENNIALS
IRRIGATION/DRAINAGE · LIGHTING
TURF · TOOLS · STONE/PAVERS**



sunlight, and thus temperature on plants. Water loss from shading is probably minimal compared to 'evaporative cooling' (transpiration). So trees and shrubs could probably provide better cooling effects for the same amount of water absorbed from soil.

There are other reasons that lawns may consume more water than their tree and shrub counterparts. There are normally no more than 2 kinds of grasses in a particular lawn, so it's a monoculture or very close to monoculture. Weeds, which are often 'water leaks', are an unavoidable problem in monoculture. We often mulch planting beds, and reducing evaporation from soil is one of the biggest benefits. Weeds on mulch are much easier to deal with than those in lawns.

How landscape plants are planted has a lot to do with landscape water

use, too. Turf grass, unfortunately, is often treated as a 'cover-up' tool by contractors. After construction of a house a thinnest possible layer of topsoil (~6") is used to smooth up the front and backyard before sod is installed and watered in. Very 'efficiently' the property is 'greened' up and a problem is created for the homeowners to deal with. On the other hand, when landscape professionals put in planting beds, soil preparation (discussed in the previous issue of TNLA GREEN) is an important step. Nobody will ever plant their trees, shrubs or flowers on only 6" of good top soil. It'll be like putting those plants on its 'death bed', slow from some and fast for the others.

I want to come back to 'in defense of turf'. What I'm advocating is 'practical turf area' and the key word is 'practical'. More or less turf is not the question, but rather



We love our lawns!

what is 'practical', with the amount of resources that could be possibly devoted to lawn care. Starting from proper turf selection I'm all for giving lawn the proper care it deserves. I just signed up James for spring soccer. I'm sure we will have a lot of fun like we did this fall, on the manicured soccer field. Did I mention it was turf? ☺

The New Generation Basic



Now, Quali-Pro is making "Basic" even "Better" by creating new and unique products to help keep lawns and landscapes looking their best. Just what you'd expect from Quali-Pro, the New Generation Basic. Contact your local Quali-Pro sales representative for information on our Early Order Program and a list of participating distributors.



Quality Turf & Ornamental Products



Basically Better

www.quali-pro.com

COME GROW WITH US



Magnolia
Gardens
Nursery



Plants For Texas[®]

Texas Born

Texas Tested for Texas Gardens[™]
www.plantsfortexas.com

www.magnoliagardensnursery.com

1-800-931-9555

Mention This Ad for \$25.00 Off Your Next Order!



TEXAS SUPERSTAR[®]



Check out our New Brochure!



Tycoon
Tomato



Purple Flash
Pepper



Plan to grow our newest
Superstar which will be
promoted in March!

Now including all promotions through
2014 with QR Codes connecting to
plant pages on

www.texassuperstar.com

Look for this great new
ornamental pepper during
our April promotion!

Download your FREE copy at GOTEXAN.org or at TexasSuperstar.com or contact the Texas Department of Agriculture at (877)99-GOTEX for brochure copies to distribute in your retail Garden Center or for Informational Programs.

Notes from SFA Gardens

Connecting People, Plants and Plans

by David Creech and Dawn Stover



Dr. Dave Creech is Professor Emeritus and a Regents Professor of Horticulture at Stephen F. Austin State University. Dawn Stover is a Research Associate with the SFA Mast Arboretum in Nacogdoches, Texas.



We've just returned from the annual conference of the Southern Region International Plant Propagators Society (IPPS). This year's gathering was held on the campus of the University of Georgia in Athens, November 4-6, 2013. The IPPS mantra is to seek and to share and that's exactly what happens. If you like plants and the people who find, grow and market them, this is the conference for you. It's an eclectic gathering of about 200 nurserymen, landscapers, plant enthusiasts and academics from across the South. Sprinkled in to the mix are undergraduate and graduate students majoring in horticulture in a wide swath of universities across the South. This year, Dawn Stover, who manages the Mast Arboretum and so many other things, drove a load of plants and two students, Amny Rose and Jordan McGee, to the conference. This was a grueling 13-hour marathon. Here at SFA, we believe in travel. After all, students need to get their feet on the ground of as many small and large nurseries as possible if they

are to truly understand our industry. This gives our next generation of horticulturists an opportunity to rub shoulders with the movers and shakers in this business.

At IPPS, there's a day and a half of presentations by academics, nurserymen and plant professionals. These twenty minute venues are information-packed opportunities to learn from the best. Still, as far as we're concerned, the best part of this conference is a full two days of nursery and garden tours. This year's stops included Dudley's Nursery near Thompson, Georgia - a fourth generation, family run nursery. Altogether, the nursery encompasses nearly 400 acres, 173 of which are in irrigated production. The remaining land holds twelve irrigation ponds that irrigate the entire nursery save for the propagation area. Dudley's grows woody ornamentals and perennials that are shipped across the eastern USA.

McCorkle Nursery is near Dearing, Georgia, with over 440 acres of primarily woody ornamental trees and shrub production. This giant nursery markets and distributes over 4 million plants to about 1800 customers. It's one of the big boys. The nursery features innovative irrigation management strategies with a strong recapture and recycle program in place. This nursery is using eight rather bizarre robots for spacing containers. While they run over \$30,000 each, they can take close packed containers and space at programmable distances, and vice-versa. While pricey and a team of eight of them requires only one person to supervise, they don't need a lunch break and rarely complain. To be honest, labor is an issue



McCorkle Nursery demonstration of a small track ball and burlap machine.

(continued on page 54)

(continued from page 53)

of increasing complexity and difficulty for large outdoor enterprises. It's no surprise that the USA is following our European friends in finding any and all ways to save money, improve efficiency and gain a competitive edge. It's the future. The scale of the place is shocking and our two students, Amny and Jordan, suddenly realized that horticulture is big business.

Luckily there were things for the herbaceous crowd too. James Greenhouses is a perennial plug nursery located in Colbert, GA. They grow over 650 varieties of the best perennials, tropicals and specialty annuals in a facility so clean you could eat off the floor. Ellepots are manufactured onsite and are used to reduce transplant shock for some of the more valuable tissue culture items. And you can only imagine the ear to ear smile on Dawn at our visit to the UGA Trial Gardens. The trial was

designed by herbaceous plant guru, Dr. Allan Armitage and showcases annuals, perennials, vines and roses. Dr. A, as his students call him, gave us permission to take a few cuttings, so we may have come back to Texas with a few new things up our sleeves.

One of our favorite visits was Specialty Ornamentals which is near Watkinsville, Georgia. Flo Chaffin is the chief propagator and jack of all trades. From the start, it was obvious Flo is a plant person. This nursery specializes in testing, propagating and promoting new plants. The trialing areas were immaculate and brimming over with plants rarely encountered. For instance, an eight foot *Parrotia subaequalis* was in the midst of its bright red fall color. New to the USA since 1996, this species was found as a very native disjunct population in only a few locations in southeast China. It's taken a



Mark Griffith of Griffith Propagation Nursery, Inc. holding a new *Distylium* variety.

while to get this plant into the trade, but all indications are that it will be as durable as its close relative, *Parrotia persica*, the Persian witch hazel, which is tough as nails in our

GARDEN - POS

OPERATES ON SMARTPHONE OR TABLET

FEATURES:

TIME CLOCK
INVENTORY CONTROL
SCHEDULING
PAYMENT ACCEPTANCE
FINANCIAL REPORTING
TRACK SALES
AND MANY MORE
FEATURES



CONTACT INFO:

TYLER
1-800-752-5296
TYLER@LGDA.COM

PRICES STARTING AT
ONLY

\$15.⁹⁵

WWW.LGDAPOS.COM



climate and another underutilized ornamental tree. This tree features good bright yellow fall color, magical exfoliating bark in its old age, and once established it is remarkably drought tolerant in our region.

Griffith Propagation Nursery was a great stop because it features so many of the new plants that are flowing from Plant Introductions, Inc. Mark Griffith, Mike Dirr and Jeff Beasley have been creating waves of exciting new plants that are finding their way into markets across the south. In a show and tell in the greenhouse, Mark walked the audience through a series of introductions now on the scene. The new *Hydrangea macrophylla* 'Bloomstruck' was in fine show. Two new black foliated crape myrtle varieties featured very clean glossy foliage with either pink or white blooms. Mark also introduced a number of *Distylium* varieties to the crowd. I thought it was quite a stretch as an introduction, but looking at these new varieties for a few years, I take that back. These forms are exceptionally graceful, shrubbier, and will make excellent screens. 'Vintage Jade', 'Blue

Cascade' and 'Emerald Heights' are being trialed in Texas and I suspect they will be entering our markets in the near future.

While we always drive away from these events with a plant headache, it's worth it. The side bar conversations, fine dinners and camaraderie with like minded souls is invigorating, a battery charger. Jordan and Amny got to rub shoulders with the best folks in

our industry and came home with stars in their eyes, dreams in their hearts and a bigger view of what horticulture has to offer, including an amazing bunch of energetic plant geeks! Make plans to join us at IPPS next year in Hickory, North Carolina. I have asked Dawn to drive a van full of students with a load of plants strapped to the top, but she hasn't quite warmed to that idea yet. We'll see. Until next time, keep planting! ☺



© 2012 Texas Mutual Insurance Company



Parrotia subaequalis, a new plant at Specialty Ornamentals

Reduce Your Costs and Workplace Injuries. Keep Your Business in the Green.

The Texas Green Industry Safety Group combines your business with other horticultural businesses to provide workers' comp premium discounts and job-specific safety resources. As a member of the TGI Safety Group, eligible businesses may also qualify for both group and individual dividends and receive a discount for choosing the health care network option.

Here for Texas. Here to Stay.®

TexasMutual
Insurance Company



Texas' leading provider of workers' compensation insurance

Contact your agent or **Anne Sheahan** at (972) 512-7728
or email info@hiallc.com.

Dividends are based on performance and are not guaranteed.



Waiting To Get Paid?

Perhaps your invoice was put in the wrong pile
Let us help you get it in the right pile

No Collection/No Charge

Free Credit Checks on New Customers

What our Client's are saying

"Burt & Associates have helped us recover monies and their network has saved us from settling to some bad accounts."
Kathleen Shannon – Credit Manager, Garden Resource Group, Inc.

"With over 30 years experience in the nursery industry, I can truly say that the folks at Burt & Associates are the only debt recovery specialists that you should consider using to collect your overdue receivables. The percentage of collected funds versus my previous collection agency is off the charts!"
Steve Wagner – General Manager, Brock Farms Nurseries

"We at TreesUSA have used the services of Burt and Associates on a few occasions with customers who have old outstanding balances. The team of Burt and Associates are always very communicative, let us know when we can expect payment, and usually have come through with collecting the past due accounts on a very timely basis. We would highly recommend Burt and Associates for their services."
Cecil Brasher – TreesUSA



TNLA
Endorsed
Service
Provider

Call for
information

Call
(800) 755-7111
Matt Travis
ext. 202
Cassandra Ynguez
ext. 208



Scan this



IRRIGATION
STATION

ex·pe·ri·ence [ik-speer-ee-uhns]

knowl·edge [nol-ij]

qual·i·ty [kwol-i-tee]

•

EVERYTHING
YOU
NEED

AUTHORIZED DISTRIBUTOR

Hunter® RAIN BIRD®

Your premier wholesale irrigation & landscape resource

TX 800-356-2458 • OK 800-730-7246 • IRRIGATIONSTATION.COM

TNLA ANNOUNCES

The newest addition to the
TNLA family of Certified
Professional Certifications



**Texas
Certified
Landscape
Associate
Exam**

**For landscape contractors
who want to position
themselves for a career in
the Green Industry**

The TCLA exam was developed by a taskforce of experienced landscape professionals and expert collegiate faculty. The exam covers, but is not limited to, landscape design and plan reading, landscape maintenance, landscape equipment, safety and first aid, irrigation, pruning, pesticides, and plant identification.

Visit tnlaonline.org for more information.

Texas Nursery & Landscape Association Certified Professional Quarterly Quiz

This CEU opportunity provided by MengMeng Gu, Ph.D. and Dr. Kevin Ong, Texas A&M AgriLIFE Extension

Choose only one correct answer for each question. A completed exam with a score of 75% or higher will qualify for 1 CEU towards TNLA certification. Quizzes scoring less than 75% will be returned and can be resubmitted. Correct answer can be sent upon request. We encourage you to return the completed quiz by **March 1, 2014**.

1. In the five year period from 2002 to 2007 number of farms producing basil increased by:

- a. 5%
- b. 75%
- c. 13%
- d. 25%

2. The most common species of basil cultivated for culinary use is:

- a. *O. basilicum*
- b. *O. citridorum*
- c. *O. henry*
- d. *O. diverticulum*

3. The most popular basil cultivar in both commercial production and homeowner gardens is:

- a. Gecofure
- b. Italian Large Leaf
- c. Magical Michael
- d. Genovese

4. The earliest reports of downy mildew in Texas were in:

- a. 2007
- b. 1984
- c. 2011
- d. 2010

5. Symptoms of downy mildew can include all but:

- a. Yellowing of leaves
- b. Fuzzy appearance on the underside of leaves
- c. Leaf dropping
- d. Dark leaves

6. Sporangia can be detected through:

- a. Inspection with a microscope
- b. Carbon-14 dating
- c. Visual inspection
- d. It cannot be detected

7. Downy mildew can be spread through all of the following except:

- a. Warm humid environmental conditions
- b. Infected seeds
- c. Wind-spersed sporangia
- d. Genetic material

8. The following are the best ways to prevent the spread of downy mildew except:

- a. Prevent exposure to sunlight
- b. Reduce humidity
- c. Reduce leaf wetness
- d. Identify and remove infested plants

9. Which of the following is the active ingredient in OxiDate?

- a. Phosphorous Acid
- b. Neem oil
- c. Hydrogen dioxide
- d. Potassium bicarbonate

10. Which of the following cultivars are the least susceptible to basil downy mildew:

- a. Genovese Martina
- b. Blue Spice
- c. Poppy Joe's
- d. Red Rubin



PLEASE RETURN THE COMPLETED QUIZ TO:

Texas Nursery & Landscape Association | 7730 South IH-35 | Austin, TX 78745 | Fax: 512.280.3012
Please retain a copy for your records.

NAME: _____ Certification Type: ☐ TCNP ☐ TMCNP ☐ TCLP ☐ TCLA

COMPANY: _____

PHONE: _____ EMAIL: _____

SUBMATIC TECHNOLOGIES

WATER MANAGEMENT SOLUTIONS

PRODUCT GUIDE

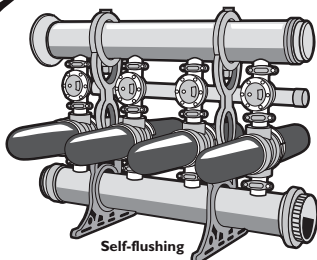
Includes everything you need for the ultimate water management systems:

Driplines, Valves, Sprinklers, Controllers, Injectors, Hoses, Sensors, Tubing and much more.



State of the Art Filtration

NEW APOLLO DISC FILTER ★ ★ Reaching for the Stars ★ ★



- For ponds, canals and rivers
- 50 to 3,500 GPM and up
- Automatic and pre-assembled
- Compact - fits in 14' x 6' area
- Quick backflush

Greenhouse & Nursery Systems

- For misting, humidifying, fogging and sprinkling

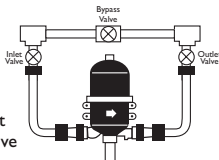
Super Fogger

- Efficient method for controlling greenhouse conditions (100 micron fog)
- Flow rate: 3.3 GPH



Bridgeless Micro Sprinkler

- Bridgeless design - no dripping
- Flat trajectory
- High distribution uniformity



Injectors

Proportional

- Constant rate
- Ratio adjustment
- Very smooth drive

Container Systems



Weight Assemblies

- Pressure compensating
- Highly versatile

Spray Stakes

- Unique oval pattern
- Multiple flow rates

3804-D Woodbury Drive
Austin, TX 78704

512.440.7744 • Fax 512.440.7793

New Members

Welcome! TNLA would like to welcome its new members. If you would like to become a member, or if you have any questions or concerns about your current membership, please contact us at 800.880.0343. Visit www.tnlaonline.org to learn about the benefits of becoming a part of TNLA.

REGION 1

Branch Landscape

Hill Horticulture, Inc.

Michael Muhl
930 Clydeville Rd
San Antonio, TX 78216-2801
www.hillhorticulture.com

Government Employee

Steven Wielgosh

City Of Schertz
224 Bridge Crossing
Cibolo, TX 78108

Amanda Wielgosh

San Antonio Botanical Garden
224 Bridge Crossing
Cibolo, TX 78108

REGION 2

Landscape

Tijeras Landscaping

Florenso Tijerina
16630 Rippling Mill Dr
Sugar Land, TX 77478
www.tijeraslandscaping.com

Houston Express Blower

Michael Barrera
3207 W Bendersland
Spring, TX 77386
www.houstonexpressblower.com
Hydroseeding
Landscape Contractor

Bushmaster Landscape Inc.

Steven Sikora
PO Box 6235
Katy, TX 77491
www.bushmasterlandscaping.com
Irrigation
Landscape Designer
Interiorscaper
Landscape Contractor

REGION 3

Grower

Joe Smith Farms, Inc.

Betty Smith
15305 US Highway 79 E
Jacksonville, TX 75766-7383
Greenhouse Grower
Trees
Tropicals
Wholesaler
Nursery/Garden Center

Supplier

Pierson And Fendley Insurance Agency, LLC

Matt Frierson
PO Box 459
Paris, TX 75461
www.pierson-fendley.com

REGION 4

Associate Retail

Teresa Padian

Calloway's Nursery Store 116
7616 E Greenway Blvd
Dallas, TX 75209

Landscape

C & R Enterprises

Rodger Williams
119 Suburban Dr
Ovilla, TX 75154
Florist
Grounds Maintenance
Landscape Designer
Nursery/Garden Center

Supplier

Halleck Horticultural

Leslie Halleck
Dallas, TX
www.lesliehalleck.com
Allied Supplier
Business Services
Publishers/Media

CFA

Terry Fick
10440 N Central Expwy #800
Dallas, TX 75231
www.cfaw.com
Business Services

REGION 5

Landscape

Lawn Patrol Service, Inc.

Tony Conley
PO Box 330895
Fort Worth, TX 76163
www.lawnpatrolservices.com
Grounds Maintenance
Irrigation
Landscape Contractor

Green With Envy Landscape & Maintenance

Tamara Vaughn
6000 Baker Ln
Alvarado, TX 76009
greenwithenvydfw.com
Grounds Maintenance
Irrigation
Landscape Contractor

Student

Cody May

Crowley High School
2617 Colt Ln
Crowley, TX 76036

REGION 6

Government Employee

Jeff Floyd

Texas A&M AgriLife Extension
1010 E 8th St
Odessa, TX 79762

REGION 8

Educator

Ricky Prescott

Lampasas ISD
2716 S Hwy 281
Lampasas, TX 76650

Wayne McPhaul

Navasota ISD
PO Box 763
Lexington, TX 78947

Government Employee

Joe Todaro

Texas State Technical College - Waco
www.tstc.edu
3801 Campus Dr
Waco, TX 76705

REGION 9

Out of State Grower

Tom Dodd Nurseries, Inc./Twin Oaks Nursery Inc.

Julia Tanner
PO Box 45
Semmes, AL 36575-0045
www.tomdodd.com
Trees

Trees-Container
Woody Ornamentals
Woody-Container

Out of State Supplier

Dabmar Lighting, Inc.

Mark Davidson
2140 Eastman Ave
Oxnard, CA 93030
www.dabmar.com
Manufacturer



TEXAS NURSERY & LANDSCAPE ASSOCIATION

Return to TNLA, 7730 South IH-35, Austin, TX 78745-6698 • 512.579.3866 • Fax 512.280.3012
email membership@tnlaonline.org or apply online at tnlaonline.org

MEMBERSHIP APPLICATION

PRIMARY CONTACT All correspondence goes to this person. If you want additional people or business locations to receive correspondence, please complete a separate application for each to join as an associate or outlet member.

FIRM NAME _____
PRIMARY CONTACT NAME ☐ MR. ☐ MRS. ☐ MISS ☐ MS. _____
TITLE _____
MAILING ADDRESS _____
CITY, STATE, ZIP _____ COUNTRY _____
TELEPHONE # _____ TOLL FREE # _____
FAX # _____ MOBILE # _____
E-MAIL _____ WEBSITE _____

SECONDARY CONTACT

SECONDARY CONTACT NAME ☐ MR. ☐ MRS. ☐ MISS ☐ MS. _____
TELEPHONE # _____ E-MAIL _____

PUBLISHED CONTACT INFORMATION (if different from above). This will be the only contact listed in the Membership Directory and Buyers' Guide publication, the online product and services finder.

FIRM NAME _____
DIRECTORY CONTACT NAME ☐ MR. ☐ MRS. ☐ MISS ☐ MS. _____
TITLE _____
ADDRESS _____
CITY, STATE, ZIP _____ COUNTRY _____
TELEPHONE # _____ TOLL FREE # _____
FAX # _____ E-MAIL _____
WEBSITE _____

INDUSTRY SEGMENT For voting purposes, indicate your business' primary industry segment. **Please choose only ONE category.** (Note: Educator/Student Membership, Government Employee Membership, Associate Membership, and Out of State Membership are non-voting membership categories.)

☐ SUPPLIER ☐ GROWER ☐ RETAIL ☐ LANDSCAPE

BUSINESS ACTIVITY Please indicate each business activity you are involved in:

SUPPLIER:

- ☐ Manufacturer
- ☐ Distributor
- ☐ Business Services
- ☐ Publisher/Media
- ☐ Wholesaler/Rewholesaler
- ☐ Broker
- ☐ Other _____

GROWER:

- ☐ Greenhouse
- ☐ Trees
- ☐ Tropicals
- ☐ Turf
- ☐ Woody Ornamentals
- ☐ Aquatic
- ☐ Roses
- ☐ Other _____

RETAIL:

- ☐ Nursery/Garden Center
- ☐ Florist
- ☐ Other _____

LANDSCAPE:

- ☐ Contractor
- ☐ Designer
- ☐ Architect
- ☐ Interiorscaper
- ☐ Irrigation
- ☐ Hydroseeding
- ☐ Grounds Maintenance
- ☐ Other _____

OTHER:

- ☐ Education/Research/Student
- ☐ Government Agency
- ☐ Other _____

(Application continues on next page)

2014-2015 TNLA Membership Dues Table

If membership starts in one of the months listed below, dues are prorated as shown

Business Membership Rate Table based on Gross Annual Sales in Texas

Annual Dues*	Pro-rated dues (for Primary & Out of State Business memberships only)					
	August	September	October	November	December	January
If joining Feb.-Aug.	If joining after the third Thursday in August					Pays for Jan., Feb. and entire following year
\$325	\$172	\$163	\$137	\$107	\$81	\$380
\$525	\$279	\$263	\$221	\$173	\$131	\$614
\$630	\$334	\$315	\$265	\$208	\$158	\$737
\$950	\$504	\$475	\$399	\$314	\$238	\$1112
\$1275	\$676	\$638	\$536	\$421	\$319	\$1492
\$1575	\$835	\$788	\$662	\$520	\$394	\$1843
\$325	\$172	\$163	\$137	\$107	\$81	\$380
\$90	One operating facility, owned by the Primary Business, must join as an Outlet Member in each Region where a facility exists. Associate Member - an individual employed by a business member, or an individual employed by a company that does not qualify for any other type of membership.					
\$25	Individual employee or facility of any government or academic institution that does not sell horticultural products or services. Note: Employees of government entities that sell horticultural products or service must join as Business Member.					
\$10	Please submit proof of enrollment with membership application.					

*Annual dues March 1, 2014 through last day of February the following year. **Outlet, Associate, Government Employee, Educator and Student Dues are not prorated.

Please select the appropriate membership type and corresponding dues amount using the table above

Membership: \$ _____ **Check one:** ☐ Primary Business ☐ Out of State ☐ Associate ☐ Government Employee ☐ Educator ☐ Student

Additional Outlet Member: \$ _____ Complete membership application for each Outlet: \$90 each, not prorated. Include name of Primary Business Member on each form

Website Hotlink \$ _____ \$35 full fiscal year, not prorated

E&R Foundation Donation \$ _____ Contributions are tax deductible under Section 501(c)3 of IRS code 1986

Political Action Committee \$ _____ Personal contributions of \$100 or greater. No business check can be accepted

Total Amount: \$ _____

I hereby apply for membership in the Texas Nursery and Landscape Association, agree to abide by the policies of said organization, and will adhere to the TNLA Code of Ethics. Payment is enclosed for membership dues through February. By signing this application, I agree to allow TNLA to contact me by mail, phone, fax, e-mail, and other methods. Payment for dues to the Texas Nursery and Landscape Association is not deductible as a charitable contribution but may be deductible as an ordinary business expense. TNLA estimates that 5% of your dues payment are not deductible due to TNLA's lobbying activities on behalf of its members.

APPLICANT SIGNATURE _____ DATE _____

REFERRED BY _____ COMPANY _____

Payment Method: ☐ CHECK (PAYABLE TO TNLA) ☐ MC ☐ VISA ☐ AMEX ☐ DISCOVER

CARD NUMBER _____ EXP. DATE _____ CARD VERIFICATION NUMBER _____ (MC/Visa: last 3 numbers located on signature line on back of card; AMEX/Disc: number printed on front of card above embossed digits.)

BILLING ADDRESS FOR CC WITH ZIP CODE _____

NAME APPEARING ON CARD (PLEASE PRINT) _____

SIGNATURE (AS ON CARD) _____

FOR TNLA OFFICE USE ONLY

Receipt Date _____ Amt Rec'd \$ _____ Check # _____ MC / VISA / AMEX / DISC
Batch # _____ Member _____ Region _____ (1013)

Calendar

JANUARY

- 8 2014 Bartlett Winter Seminar
- 8-9 2014 Centennial Conference, College Station
- 9-10 TNLA Business Management Workshop, San Marcos
- 13 Managing Water Quality in the Green Industry, University of Florida
- 16 Arboriculture 101 (day 1), Bryan, TX
- 17 Arboriculture 101 (day 2), Bryan, TX
- 23 Arboriculture 101 (day 3), Bryan, TX
- 24 Arboriculture 101 (day 4), Bryan, TX
- 27 2014 Turfgrass Ecology & Management Short Course, College Station

FEBRUARY

- 4 School for County Commissioners Courts, College Station, TX
- 5 Ornamental and Turf Category Training, Houston, TX
- 5 Structural Pest Control General Standards Technician Training, Dallas, TX
- 13 Ornamental and Turf Category Training, Dallas, TX
- 20 Structural Pest Control General Standards Technician Training, Houston, TX
- 21 East Texas Pasture Management, Overton, TX
- 25 Structural Pest Control 20 Hour Apprentice Training
- 26-28 Texas Invasive Plant and Pest Conference, Port Aransas, TX

For meeting times and additional information,
please visit www.tnlaonline.org

newly certified individuals

Jeremy Hitchcock, TCLP

The Spencer Company
Houston

Garrett Mikulik, TCNP

Scherz Landscape Co.
San Angelo

Theodore Jilek, TCNP

Strong's Nursery & Garden Center
Carrollton

Timothy R. Henson, TCNP

Calloway's Nursery Store 108
Arlington

Susanna K. Whelan, TCNP

Calloway's Nursery 118
Bedford

Kane Kelley, TCNP

Calloway's Nursery #121
Mc Kinney

Learn more about the benefits of
certification at www.tnlaonline.org.



A Drop-A-Cup

Add to your fertilizing
program for all
your planting needs



SUPERthrive® is proud to announce the addition of kelp to its timeless formula. After years of scientific testing, **SUPERthrive®** is now enhanced with nutrition from the sea. Note that the signature color and odor are slightly different. You will experience the same results as always ~ and may see new benefits.



SUPERthrive®
1940 WORLD'S FAIR
Gold Medal

The Original Vitamin Solution

Vitamin Institute ~ www.superthrive.com

ADVERTISERS INDEX

PAGE	ADVERTISER	WEBSITE
48	Arborjet	www.arborjet.com
56	Burt & Associates	www.burtcollect.com
62	Carl Pool Plant Food/Vital Earth	www.carlpool.com
2	Ewing Irrigation Products, Inc.	www.ewing1.com
6, 64	Groundworks Texas!	www.specpalm.com
4	Hotchkiss Insurance	www.hiallc.com
56	Irrigation Station	www.irrigationstation.com
54	Lawn & Garden Dealers Association	www.lgda.com
44	Living Earth	www.livingearth.net
40	Local Plant Source, Inc.	www.localplantsource.com/TNLA2014
52	Magnolia Gardens	www.magnoliagardens.com
63	OHP, Inc.	www.ohp.com
50	Shemin Nurseries, Inc.	www.shemin.net
46	Shweiki Media	www.shweiki.com
51	Quali-Pro	www.quali-pro.com
44	Spring Meadow Nursery	www.springmeadownursery.com
58	Submatic	www.submatic-usa.com
46	Target Specialty Products	www.target-specialty.com
52	Texas A&M AgriLife	www.texas superstar.com
55	Texas Mutual Insurance Company	www.hiallc.com
32, 33	The Thompson Group at Classic Chevrolet	www.classicfleet.com
61	Vitamin Institute	www.superthrive.com

Since 1945



Plant Foods
for Growers,
Landscapers &
Garden Centers

**We've Got Your
Fertilizer!**

- **Earth Safe Organic**
(19 items)
- **Fertilizer Components**
(Huge Selection)
- **Root Activator**
(Organic - All Natural)
- **Vitazyme**
(Bio-Stimulant)
- **Plant Specific Fertilizers**
- **Custom Fertilizers**
- **Micro-Nutrient Packages**
- **Grower Mixes**
- **Vital Earth Soils**
- **Custom Mixes**

**Available Through
Your Favorite Distributor**

706 E. Broadway • P.O. Box 1148
Gladewater, TX 75647
903-845-2163

1-800-245-7645

www.carlpool.com

A Division of Vital Earth Resources, Inc.



AHEAD OF THE CLASS



Voted *Best*
Herbicide
in class!

- Pre-emergent control of grass and broadleaf weeds
- Extended and exceptional length of control
- New and unique mode of action (MOA)
- Eliminates splash-up injury
- Multiple use sites

© 2013 OHP. Marengo is a registered trademark of Bayer Environmental Science.

Marengo[®]
Herbicide

#marengo 

@OHPsolutions 

ohp.com

(800) 356-4647



INSECTICIDES
FUNGICIDES
MITICIDES
PGRS
• HERBICIDES

ohp | Partners
with
solutions

www.SpecPalm.com



www.DatePalm.com

**65,000 cold tolerant palms
under production near Houston Texas**

**All palms
sold with a
6 month
warranty**

Produced in heavy soils...



...for use in heavy soils

Exceptional Quality - Exceptional Service - Exceptional Results



sales@specpalm.com

(800) 753-5127
5203 County Road 397
Alvin, TX 77511