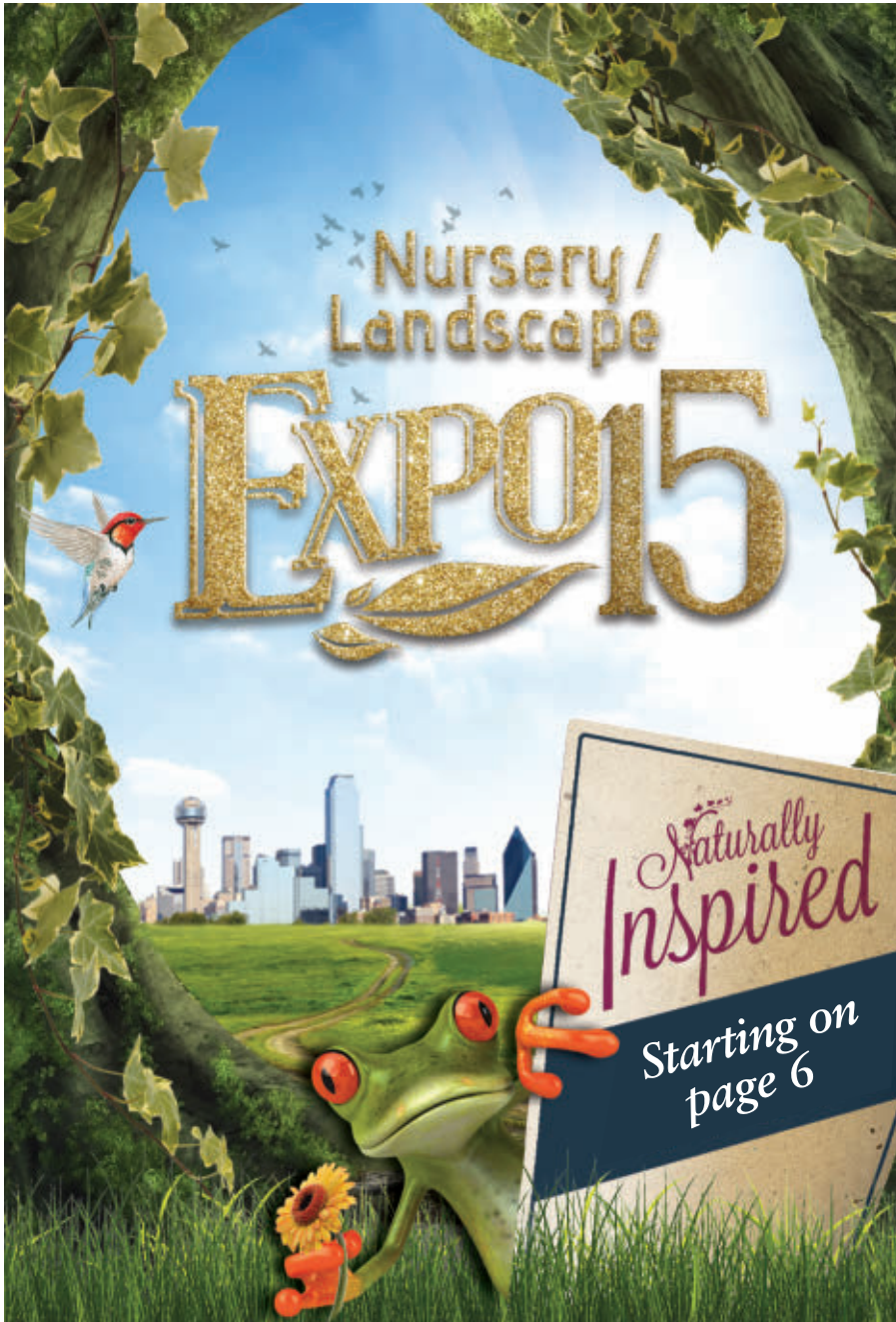


TNLA GREEN

NOV-DEC 2015

THE OFFICIAL PUBLICATION OF THE TEXAS NURSERY & LANDSCAPE ASSOCIATION



Should You Be Worried About Botrytis?

PAGE 35

Kiwis Could Be Coming to Texas

PAGE 39

PLUS:

34 The Winter Showcase

43 New Members

45 Calendar of Events



**Texas Nursery
& Landscape
Association**

PRSRT STD
U.S. POSTAGE PAID
SAN ANTONIO, TX
Permit No. 244



More Than Just Products.

We're not only your best source for landscape and irrigation supplies—we are grillers, parents, sportsters, weekend warriors...*people like you.*

Stop by and check out the full product selection, sign up to get our event emails or just drop by to say, "Yum!"
There are more reasons than ever to shop at Ewing.



EWING[®]
Irrigation & Landscape Supply

EwingIrrigation.com/locations



Agriculture



Irrigation
+ Landscape



Land + Resource
Management



Outdoor
Living



Pest Control



Turf
+ Athletics



9



26



39

TNLAGREEN

NOV•DEC 2015

FEATURES

6 The 2015 Nursery/Landscape EXPO Report

The Nursery/Landscape EXPO is truly the premier place for horticulture professionals to grow! The Education Conference and Trade Show provide a unique opportunity for business networking, professional development and more! The 2015 EXPO was held August 13-15 at the Kay Bailey Hutchison Convention Center in Dallas, Texas! Relive the excitement in this issue!

Booth Award Winners [p.16](#)

Welcome to Dallas Party [p.26](#)

Thank You Sponsors [p.33](#)

9 Education Highlight Reel

The EXPO Education Conference offered three full days of learning from some of the industry's top professionals! Offerings ranged from innovative Keynote Speakers to informative education sessions!

COLUMNS

35 Integrated Pest Management Botrytis – What Is It and Should I Be Concerned?
by Blake Commer and Dr. Kevin Ong

39 Notes from SFA Gardens Is There a Future for Kiwis in Texas? *by Dr. David Creech*

DEPARTMENTS

43 New Members

43 Newly Certified

45 Calendar of Events

46 Advertisers Index

Texas Nursery & Landscape Association
7730 South IH-35
Austin, TX 78745-6698
phone: 512.280.5182 or 800.880.0343
fax: 512.280.3012
email: info@tnlaonline.org
www.tnlaonline.org

Stay Connected!





SUPERthrive® IS ANNOUNCING A PHOTO CONTEST!



SUPERthrive® would love for you to show off your pumpkin-carving skills and what you're growing!

We have two categories:

1) Pumpkin Carving 2) Show What You Grow

See our Facebook page for entry criteria.

Photo Contest Ends on November 22nd

Always ahead in science and value.

SUPERthrive®
1940 WORLD'S FAIR
Gold Medal
The *Original* Vitamin Solution

Vitamin Institute
North Hollywood, CA 91605
www.SUPERthrive.com

OFFICERS

Chairman of the Board	Johnette Taylor	Dallas
Chairman-Elect	Billy Long, TCLP	San Antonio
Immediate Past Chairman	Paul Tomaso, TCNP	Dallas
President	Amy Graham	Austin

BOARD OF DIRECTORS

Region I	Kevin Grossberndt	San Antonio
Region II	Jay Williams	League City
Region III	Herman Vess, TMCNP	Edgewood
Region IV	Jason Craven	Dallas
Region V	Mike Whisenand	Fort Worth
Region VI	Steven Akers	Slaton
Region VII	Todd Kinney, TMCNP	Donna
Region VIII	JJ McAuliffe	Austin
Supplier Director	Tim Little	Dallas
Landscape Director	Jerry Maldonado, TCLP	San Antonio
Grower Director	Bill Carson	Austin
Retail Director	Donna Buchanan, TMCNP	Houston

TNLA STAFF

President	Amy Graham
Director of Finance	Cheryl Staritz
Accounting Assistant	Aimee Luna
Director, Legislative and Regulatory Affairs	Jim Reaves
Professional Knowledge & Education Manager	James Theiss, TCLP, WS, TCLA, Certified Arborist
Administrative Assistant – Strategic Initiatives	Debra Allen
Director, TNLA & EXPO Marketing/ Communications	Sarah Riggins, CEM
Director, Expo Exhibits and Membership	Amy Prenger, CEM
Business Development/ Sales Executive	Mike Yelverton, TCNP & WS
Administrative Assistant EXPO	Trevor Peevey
Professional Experience Manager	Marisol Ybarra
Office Operations Assistant	Nancy E. Sollohub
Region Field Manager	Nathan Flint
Communications Specialist	Molly Wallace

TNLA GREEN STAFF

Editor	Molly Wallace
Guest Editor	Jim Reaves
Graphic Designer	Marie Leonard
Ad Sales	Stephanie Shaefer

TNLA Green magazine is a member service of the Texas Nursery & Landscape Association, and is published bi-monthly. Advertising information is available from TNLA, 7730 South IH 35, Austin, Texas 78745, online at www.tnlaonline.org, or by calling 800-880-0343. TNLA office hours are weekdays, 8:30AM - 5 PM CST. © 2015 Texas Nursery & Landscape Association



*A Video
Message from
Amy Graham,
TNLA President*

Grow Your Network By Connecting With Us!

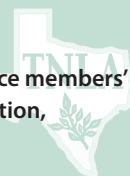


*Get up to the minute information about TNLA events,
members and opportunities!*

► **"Like" Texas Nursery & Landscape Association**

MISSION STATEMENT

The Texas Nursery & Landscape Association's mission is to enhance members' business success through legislative/regulatory advocacy, education, networking, and promotion of professionalism.

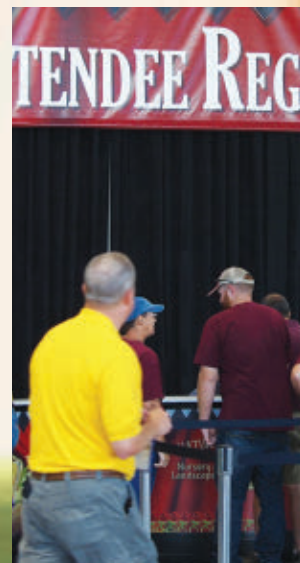


Nursery/ Landscape EXPO15

Naturally Inspired REPORT!

The 2015 Nursery/Landscape EXPO was truly naturally inspired! Exhibitors and attendees enjoyed browsing a sold out Trade Show Floor featuring more than 1,000 booths! The Kay Bailey Hutchison Convention Center was buzzing throughout the whole show as participants explored over half a million square feet of Trade Show Floor! The Trade Show Floor was a great place to do business and make valuable connections, but it wasn't the only thing going on! The Nursery/Landscape EXPO also featured educational sessions, parties and awards! The Texas Nursery & Landscape Association would like to thank the sponsors who helped to make 2015 spectacular.

The Texas Nursery and Landscape Association is already excited for next year's EXPO event, August 18-20 at the George R. Brown Convention Center in Houston! Many booth spaces have already sold, so be sure to reserve your booth space for 2016 now!





HIGHLIGHTS AT A GLANCE:



- **Education** was held on all three days! Great keynote speakers packed the house!
- The **Newcomer's Shindig** was a new event that gave a warm welcome to first time attendees and exhibitors! Newcomers got a tour of the Trade Show Floor and had the opportunity to network in the Hookah "Like" Lounge!
- This was the first year for the TNLA Naturally Inspired **Women's Wine and Tapas** Get Together! The event provided an opportunity for the ladies of the Green Industry to connect and enjoy being together!
- **Gift & Garden Marketplace** showcased gifts, artisan decorations and unique products!
- A beautiful **Parks & Patio** display designed by Tarleton State University students wowed attendees!
- The **Welcome to Dallas Party** featured live music, dancing and lots of fun! It was a great opportunity to connect with Green Industry professionals off the Trade Show Floor!
- With a sold-out Trade Show Floor presenting Best **Booth Awards** was difficult! The winners seriously impressed the judges and attendees!



*Find more information at
NurseryLandscapeEXPO.org!*
EMAIL expo@nurserylandscapeexpo.org or call
512.579.3857 for information about exhibit spaces!

ARBORJET EQUIPMENT AND FORMULATIONS

WORK BETTER TOGETHER

Increase profitability in 2015 by adding trunk injection to your plant health care program!

Emerald Ash Borer • Rugose Spiraling Whitefly • Bacterial Leaf Scorch • Fireblight • Leaf Chewing Caterpillars • Aphids and Thrips



Visit go.arborjet.com/hands-on or call 781.935.9070 to schedule your hands-on training in 2015.

©2015 Arborjet, Inc. TREE-äge® insecticide is a Restricted Use Pesticide and must only be sold to and used by a state certified applicator or by persons under their direct supervision. TREE-äge® is a registered trademark of Arborjet, Inc.

ARBORjet
Revolutionary Plant Health Solutions

Nursery/
Landscape

EXPO15

Education HIGHLIGHT REEL

**The 2015 Nursery/Landscape EXPO
had two full days of education**

that supported thirty two sessions with topics ranging from drought and trees to Green Industry trends. Three keynote speakers attracted over 350 attendees just in one presentation on Thursday evening! In total, about 900 Nursery/Landscape EXPO attendees participated in education sessions over the three days.



Nursery/
Landscape

EXPO15

Education HIGHLIGHT REEL



Over 150 hours of CEUs from seven certification and licensing agencies.

For the first time LACES (Landscape Architect Continuing Education System) CEUs and ARCSA (American Rainwater Catchment Systems Association) CEUs were offered. This was also the first year that the majority of the education moderators were college students coming from Texas A&M University, Tarleton State University and Texas Tech University.



THANKS TO

LANDMARK
NURSERIES, INC.

for generously sponsoring this year's
Nursery/Landscape EXPO education sessions!



Good coverage. It's essential for growth.



With over 30 years of experience and the endorsement of the Texas Nursery and Landscape Association (TNLA), Texas Turf Irrigation Association (TTIA) and many other industry associations, we understand what it takes to protect your green industry business. We'll make sure you have the coverage you need to protect your business and that it's cost-effective. Both are good objectives for growth. As a Trusted Choice® independent agency, we'll access many of the nation's leading insurance companies to provide all the coverage your business needs in one strong yet cost-effective solution.

Call **800-899-9810** or visit **www.hiallc.com** today
to schedule a no-obligation consultation.

Online at **www.hiallc.com**



HOTCHKISS
INSURANCE AGENCY, LLC

Experience, Choice and Service

30 years of experience and the nation's leading insurance companies **all under one roof** - **www.hiallc.com**

General Liability » Business Property » Workers' Compensation » Equipment » Pesticide & Herbicide » Business Auto
Employee Benefits » Pollution Liability » Nursery Inventory » Umbrella » Bonds and more!

Nursery/
Landscape

EXPO15

Parks & Patio

**Parks and Patio is a favorite every year
at the Nursery/Landscape EXPO!**

This year, Landscape Design students from Tarleton State University created the design for the Parks and Patio Booth! All the products used were generously donated by 2015 exhibitors and volunteers worked tirelessly to create the booth. After the Nursery/Landscape EXPO the materials that were used were donated to Naaman Forest High School, Tarleton State University and Cleburne Bible Church.

Thanks to Charles Britton Jr. TMCNP, Joseph Johnson, TMCNP, Johnette Taylor, Sam Weger, TMCNP, Ken Morrow, TMCNP, Derek Whisenand, Heather Hardee, TCNP, Laura Gruenau, Dr. MengMeng Gu, Shaun Murphy TCLP, Michael Brown TCLP, Mike Branch and Anne Muscat for serving on the Parks & Patio Committee!



**The Nursery/Landscape EXPO
was named as one of the 25
Fastest Growing Trade Shows
in the US by TSNN**



Nursery/
Landscape

Expo15

Gift & Garden
MARKETPLACEChairs'
RECEPTION

Chair Johnette Taylor hosted
an event to honor top sponsors,
key participants in the TNLA Political
Action Committee and those helping
TNLA move the Green Industry
forward in Texas!



From left to right: James Harden, Sr., TMCNP, Joanne Harden, Doug Rowald, Carol Rowald, Mark Baxmann, TMCNP, Jim Prewitt, James Harden, Jr., Steven Taber, TMCNP



**This was the third year that the
Nursery/Landscape EXPO has featured
a Gift & Garden Marketplace!**

The booths showcased unique gifts and products ranging
from succulents to one-of-a-kind planters!



TNLA PAC LOUNGE

**TNLA PAC supporters gathered
together in the Lounge on the Trade Show
Floor to relax and talk politics!**



Nursery/
Landscape

Expo15

Booth Award WINNERS

With over 1,000 booths
this year, the competition was fierce
for booth awards!

Best Small GREENLINE BOOTH

*Seville Farms
Lillian, TX*



Best Small HARDLINE BOOTH

*The Ground Up
Houston, TX*



The booths at this year's Nursery/Landscape EXPO featured aspects of the green industry from gorgeous flowers, to one-of-a-kind planters, to powerful machinery!

Awards have been presented for forty eight years, since the 1967 Nursery/Landscape EXPO in Austin, Texas. This year, a total of six booth awards were distributed. Hardline and greenline awards were presented to small, medium and large exhibits for exceptional displays!

Winning booths are selected based on their ability to attract attendees' attention, promote products, communicate using design and graphics, balance booth size with product placement and work within the Nursery/Landscape EXPO Display specifications.



Best Medium GREENLINE BOOTH

*J. Berry Nursery
Grand Saline, TX*



Best Medium HARDLINE BOOTH

*Jackson Pottery
Dallas, TX*

SAXON BECNEL & SONS CITRUS NURSERY



*"We start with a certified seed
and finish with a premium
Citrus tree"*

Phone 504-656-7535

Fax 504-656-7069

Ricky Cell 504-432-3007

iacitrus1@cmaaccess.com

Saxon Becnel and Sons, LLC

13949 Highway 23

Belle Chasse, LA 70037

www.saxonbecnelandsons.com

Saxon Becnel and Sons of Texas, LLC

4995 Highway 105

Orange, Texas 77630

Nursery/
Landscape

Expo15

Booth Award WINNERS

We are thrilled to present the
winners of the 2015 Nursery/Landscape
Booth Awards!

Best Large GREENLINE BOOTH

*Color Spot Nurseries
San Antonio, TX*



Best Large HARDLINE BOOTH

*Pavestone Company
Grapevine, TX*



Where Science Meets Nature



learn more at
WWW.BGI-USA.COM



info@bgi-usa.com • (561) 374-9216



Nursery/ Landscape EXPO15

Newcomers SHINDIG

This year TNLA hosted the Newcomers Shindig, sponsored by TNLA PAC,

for those who were new to the Nursery/Landscape EXPO! Before the event, newcomers were offered the opportunity to take a behind-the-scenes tour of the Trade Show Floor. Then, first time attendees gathered together in the Hookah "Like" Lounge to network and talk about their experiences. The newcomers had the opportunity to chat with experienced attendees who shared their insights, advice and favorite things about the Nursery/Landscape EXPO and the Green Industry! This event was a highlight for everyone who attended, and we can't wait to meet next year's newcomers!



Over 830 First-Time Participants
ATTENDED!





Safety and Dividends Go Together Like Seed and Soil.

Texas Mutual wants to put more green in your business—that's why we provide group and individual dividends to companies that keep their people safe. Plus, as a member of the **Texas Green Industry Safety Group**, you may receive a greater discount on your workers' comp premium. We're helping our policyholder owners be safer and stronger, and we think you'll find it very rewarding.

To see how safety can grow your dividend, contact your agent or Becky Walker at (972) 512-7770 or info@tgiwcgroup.com.



WORK SAFE, TEXAS®



While we can't guarantee dividends every year, Texas Mutual has returned \$1.8 billion to safety-conscious policyholder owners since 1999. ©2015 Texas Mutual Insurance Company

Nursery /
Landscape

Expo15

Women's Wine & Tapas GET TOGETHER

This event was ladies only! TNLA Board Chair Johnette Taylor kicked off

the event by sharing a few of her experiences as a woman working in the green industry. Afterwards, ladies enjoyed wine, tapas and each other's company as they discussed some of the unique aspects of being a woman working in the Green Industry. It was a wonderful opportunity for ladies to relax and connect with each other off the Trade Show Floor. This event was such a success that TNLA has decided to expand its women's programming!





Founded in 1978, The Thompson Group is the largest fleet and commercial facility nationwide with a highly trained staff to accurately meet your purchasing, financing and service needs of your personal, business and fleet vehicles.

Ken Thompson
Founder



Clas



PERSONAL · BUSINESS · FLEET

The Thompson Group

CLASSIC
CHEVROLET

Medium Duty
Commercial Trucks
Authorized FUSO
Service Center

PERSONAL · BUSINESS · FLEET
The Thompson Group
CLASSIC
FUSO



ClassicFleet.com Hwy 121 @ Stone Myers Grapevine

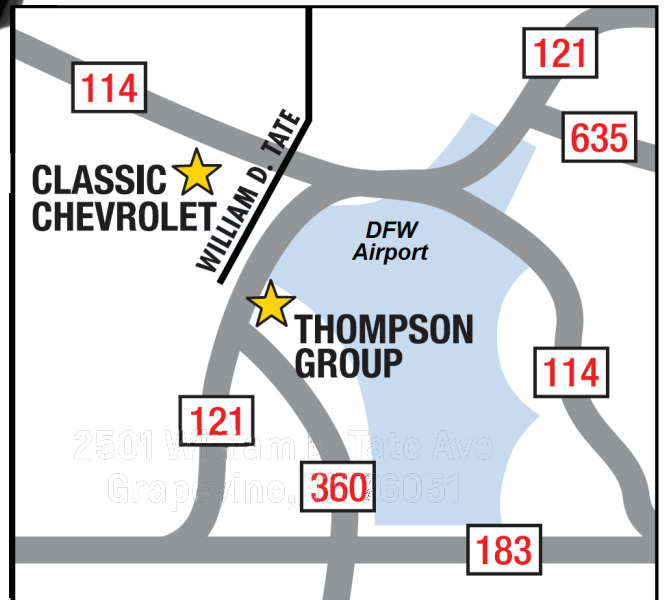


FLEET
Group
C
ET

817-410-1560



ClassicFleet.com



Nursery/ Landscape Expo 15



Welcome to DALLAS PARTY

Thank you to Tree Town, USA for sponsoring the Welcome to Dallas Party!

It was a fun-filled evening that brought both attendees and exhibitors together and provided an extra opportunity to collaborate one-on-one off the Trade Show Floor. By the end of the night everyone was rocking to live music from Bent Burns and James "Sunny Jim" White, which was generously sponsored by OHP, Inc.



Nursery/ Landscape Expo15





TNLA Certified Professionals RECEPTION

This provided an opportunity for Certified Texas Professionals to get

to know each other! Kyle Cahill, chairman of the Certification Committee led a toast to the nearly 200 Certified Professionals who attended. Thank you to presenting sponsors GO TEXAN, Calloway's Nursery and TNLA Region IV and to sponsors Arborbrace Staking Systems, Chamblee's Rose Nursery, Hotchkiss Insurance Agency, LLC, Nicholson-Hardie, TNLA Region I, TNLA Region II, TNLA Region III, TNLA V, TNLA Region VII and TNLA Region VIII for making this special event possible!



Nursery/
Landscape

Expo15





TNLA Awards CELEBRATION

Every year TNLA honors those who
are raising the standards

in the Green Industry at the Awards Celebration. This year's event was filled with motivating stories, new memories and inspired ideas.

Over twenty-five Texas Excellence in Landscaping Awards were presented to landscaping companies for outstanding work in 2015 on projects ranging from commercial installation to landscape maintenance. The Young Leader Award was presented to Zac Tolbert of Local Plant Source in Austin for his efforts in helping to move the Green Industry forward. Living Earth received the Summit Award for their exceptional contributions to the industry, their community and TNLA. Sam Weger of Calloway's Nursery in Dallas received the ARP Award in recognition of his years of service to the industry and to TNLA.

Thank you to Bandit of Texas, Ewing Irrigation & Landscape Supply, State Fair of Texas, Texas Green Industry Safety Group and Transaction Services for generously sponsoring this event.



Nursery / Landscape Expo 15

TEXAS EXCELLENCE IN LANDSCAPING AWARDS

BRONZE

Clean Scapes, LP
Ravenscourt Landscaping & Design, LLC
Matt W. Stevens Landscape Architect, LLC
Texas A&M AgriLife Research

SILVER

ValleyCrest Landscape Development, Inc. for Nationwide Operations Center
ValleyCrest Landscape Development, Inc. for McLane Stadium at Baylor University
Southern Botanical for the George Bush Presidential Center
Southern Botanical for the Lakewood Residential Restoration
The Spencer Company for The San Luis Resort
AJ's Landscaping & Design, Inc. for the Jarosz Residence
AJ's Landscaping & Design, Inc. for the Martin Residence
Southern Landscape for River Hills
Lawns of Dallas for Preston Hollow Estates
Lawns of Dallas for the Clancy Residence
Lawns of Dallas for Highland Park Residence
Lawns of Dallas for the Magnuson & Castanon Residence
Rebecca Winn of Whimsical Gardens for Borders Secret Garden

GOLD

Lambert Landscape Company for their Commercial Installation over \$100,000 project - A Spanish Colonial Masterpiece
Southern Botanical for their Commercial Installation over \$100,000 project - The Vendome.
AJ's Landscaping and Design, Inc. for their Residential Installation \$25,000-\$100,000 project - Rini's Garden
Lambert Landscape Company for their Residential Installation over \$100,000 project - French Country Retreat
Southern Botanical for their Residential Installation over \$100,000 project - Park Cities Grande Estate

GRAND PLATINUM

Lambert Landscaping Company for the Spanish Colonial Masterpiece



EXPO SPONSORS

Thank You For Your Support!



Arborbrace Staking Systems • Calloway's Nursery • Chamblee's Rose Nursery • Color Spot Nurseries • Harry's Greenhouse, Inc.
Horticultural Marketing & Printing • Hotchkiss Insurance Agency • John Deere Landscapes • Mortellaro's Nursery
Native Texas Nursery • Nature Innovations • Nicholson-Hardie • State Fair of Texas • TNLA Region I • TNLA Region II
TNLA Region III • TNLA Region IV • TNLA Region V • TNLA Region VII • TNLA Region VIII

Special Thanks to Our EXPO Partners:

Texas Irrigation Association • Dallas Market Center • Texas A&M AgriLife Extension

KICK OFF THE NEW YEAR WITH A WIN

AT THE 2016 TNLA WINTER SHOWCASE
JANUARY 27-28, 2016 - AUSTIN, TEXAS

DON'T MISS OUT ON THESE GAME WINNING PLAYS!

- **Growers Tour**
January 27th | Austin Area
- **Winter Showcase Pre-Game Tailgate Party & Happy Hour**
January 27th | Sonesta Bee Cave Austin (Host Hotel)
- **Irrigation Business Workshop (Full-Day)**
January 28th | One World Theater
- **Business Management Workshop**
January 28th | One World Theater
- **Annual Business Meeting & Lunch**
January 28th | One World Theater



REGISTRATION IS NOW OPEN!

Learn more, register at TNLAonline.org

Integrated Pest Management

Botrytis – What Is It and Should I Be Concerned?

by Blake Commer & Kevin Ong



Graduate Student,
Department of
Plant Pathology &
Microbiology, Texas
A&M University

According to the USDA National Agricultural Statistics Service's 2012 census, floriculture crops in Texas pull in well over \$400M annually. Between floriculture and landscape horticulture, there are over a thousand farms actively producing across this state, and they all have at least one thing in common. A well-known fungal pathogen lurks in their midst – and in their mist. Botrytis is a prevalent and devastating genus of plant pathogenic fungi that preys on a wide variety of hosts, especially in the ornamental industry.

Description - Symptoms, Signs, & Host Range

Botrytis favors cool, wet environments that are encouraged by shade and prolonged humidity. A rainy spring season around 60°F will increase the chance of encountering this fungus, commonly known as “gray mold.” This fungus can also grow and thrive throughout the year. Spores are suspended aurally on stalks and heavy infection resembles a silver or grey dust on stems, flowers, and leaves. Some species, including the well-known Botrytis cinerea, can also form small black

fruiting bodies called sclerotia that can overwinter on fallen debris in flowerbeds and greenhouses. Botrytis infects over 200 different hosts, including a wide variety of ornamentals, and can affect multiple parts on each plant. Certain container trees can also be affected by gray mold, as well as fruit and vegetable crops both pre and post-harvest.

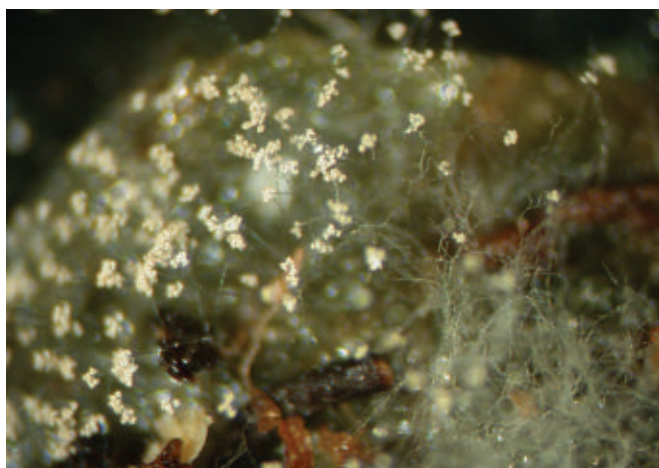
Disease Cycle

Conidia (spores) of Botrytis are free-floating in the air, and it is not uncommon for them to already be inactively resting on leaves and flowers or in residual water droplets. When environmental conditions are conducive and humidity increases, the spores begin to grow and invade the host tissue, killing cells and rotting the plant along the way. If sclerotia are formed, they can survive in soil and on fallen debris through a wide range of environmental conditions. Once prompted to germinate by conducive environmental triggers, they will produce a large amount of conidia that can cause new infections and continue the disease cycle.

(continued on page 36)



Associate Professor &
Extension Specialist,
Department of
Plant Pathology &
Microbiology, Texas
A&M University.



Cluster of spores at the end of stalk.



Heavy blighting of Zinnia liniaris.

(continued from page 35)

Management

Fungicide use is the most common management strategy when Botrytis is found to be causing plant health issues. The fast growth and reproductive nature of this fungus allows it to “evolve” and acquire resistance to the fungicides. Good cultural practices are crucial to preventing and managing

disease development throughout the year, as well as reducing opportunities for acquiring fungicide resistance. Some common cultural practices are listed below:

- Amply space plants to encourage good air circulation.
- Avoid misting and overhead irrigation, as it will readily dislodge and spread spores.
- Clean the planting area (practice good sanitation), especially between crops.
- Sanitize tools between planting batches to reduce and prevent transmission of the fungus.
- Apply fungicides at first sign of disease or preventatively when a conducive environment is predicted (wet, cool, and prolonged cloud cover).



Excessive moisture and conducive conditions resulting in blight of the pansy plant.



Rose bloom covered with sporulating Botrytis.



Jazz Hands® Loropetalum

Our new varieties have outstanding form, flowers and foliage. Available in a range of sizes from petite 10-12" tall Mini to the supersized blooms of Jazz Hands Bold Loropetalum, these new varieties will delight you with rich, non-fading color.

Amy Howard, 616-223-3365
www.springmeadownursery.com
800-633-8859 ext.1105



Download the iBook at
<http://springmeadownursery.com/catalog>

Learn about these and other Proven Winners plants with the new iBook for landscapers. Easy-to-read overviews of each genus lead to detailed, downloadable pdf sheets for individual varieties.



- Practice fungicide rotation to reduce the possibility of fungicide resistance developing. Observe FRAC numbers when planning treatment rotation.

Resistance to some strobilurin fungicides and fenhexamid has been reported on Botrytis. This is of concern as we want to continue



Bloom bud of zinnia is infected by Botrytis.

to ensure that we have effective treatment methods. A current effort is underway to learn more about Botrytis in Texas, with the goal of developing an improved understanding of the fungus, as well as better preventative and management strategies. Blake Commer, a graduate student in the Department of Plant Pathology and Microbiology at Texas A&M University, will be studying Botrytis population structures in Texas. We hope that the information gained from her work will result in better approaches to managing Botrytis issues in ornamentals. We need your assistance in helping to build a TX ornamental Botrytis collection for her study. 🌱

We Need Your Help!

If you find symptoms of Botrytis and are willing to submit a sample, please contact Blake Commer (blake.commer@ag.tamu.edu). Samples should be bagged and preferably overnighted to:

TX Plant Disease Diagnostic Lab
ATTN: BLAKE COMMER – Botrytis
1500 Research Parkway, Ste A130
College Station, TX 77845

Thank You for helping to advance knowledge



Scan this QR code for information on botrytis hosts.



LIVING EARTH[®]
MULCH • COMPOST • SOILS

www.livingearth.net

COMPOST NOW

FOR AMAZING RESULTS NEXT SPRING



Where Sustainability Begins

8 DFW LOCATIONS
CALL: 972-869-4332

12 HOUSTON AREA LOCATIONS
CALL: 713-466-7360







*Enhancing Texas Trees, Shrubs & Landscapes
Since 1880.*

DAVEY ®
Proven Solutions for a Growing World

Dallas	214-238-8172
San Antonio	210-338-8008
North & South Austin	512-580-9282
North & South Houston	832-251-7108

www.davey.com • THE DAVEY TREE EXPERT COMPANY

Dormant Tree and Shrub Pruning • Insect and Disease Management • Fall Deep-Root Fertilization • Cabling and Bracing
Certified Arborists • Fall Tree Planting • Subsurface Watering • Removal • Stump Grinding • Residential / Commercial



 **Exclusive DISCOUNT!**

INDUSTRIAL
TRUCK & EQUIPMENT
POWER

**THE LANDSCAPE
TRUCK EXPERTS**

- Large Inventory of New & Used Landscape Trucks
- Custom Split Dove-Tail Ramps
- Financing Available

Visit us at www.iptruck.com Call: 972-632-3737

Notes from SFA Gardens

Is There A Future For Kiwis In Texas?

by Dr. David Creech



Dr. Dave Creech is Professor Emeritus and directs SFA Gardens, Stephen F. Austin State University, Nacogdoches, Texas

I have just returned from three weeks of planes, bullet trains, subways, vans, taxis and trekking in China – and I'm now having my usual bout with jetlag. For two weeks I can't sleep right. I'm disoriented, confused, a bit incoherent and kind of grumpy. Staff says I'm like that all the time, but that's not true, of course. Down deep, I'm quite cheerful.

While in China Aug 12 – Sept 1, I hung my hat in Jiangsu, Sichuan, Hubei, and Zhejiang provinces trekking through blueberry research and commercial farms, Taxodium nurseries and plantings, meeting with colleagues, giving talks, and there's a blur of ornamental nurseries and gardens. Professors Yu Hong and Yin Yunlong of the Nanjing Botanical Garden are my counterpart hosts in China – blueberries and Taxodium scientists, respectively - and

after many years, we're now very good friends. Because of our success with two years of good Golden Kiwi crops, I had asked before the trip if I might connect with the kiwi scientists while in Wuhan in Hubei province - and they made it happen. This was a wonderful opportunity to see just exactly how this crop is grown in its home land, how the genetics lay out, and learn the nuts and bolts of strategies for high yields of quality production. I learned a lot. We now know enough to be dangerous.

We received the grand tour of the Hubei Institute of Fruit and Tea with our host, Dr. Lei Zhang (English name 'Jane'). Jane is a high energy young scientist who recently coauthored a publication on the genome *Actinidia* (kiwi) in *Nature Communications* in 2013. I remarked that after such an accomplishment at such a young age, the administrators would only be satisfied with the Nobel Prize. Everyone thought that was funny - and true. In addition to cultural studies with kiwi, she has an active breeding program in place with twenty advanced selections in final evaluation stage. While at the Institute, we also received fine hospitality from Zhongqi Qin, Director of the Institute, and Professor Yang Fuchen, who works with blueberries and pears. Then, with Professor Yu Hong, we visited the Wuhan Botanical Garden. This germplasm repository is home to over 50 species, 81 varieties and over 1000 genotypes, many from the wild. Plants were in good shape, the irrigation system was in fine form and many fruit were about a month or less off.

I learned that our two Auburn-introduced varieties, *Actinidia chinensis* 'AU Golden

(continued on page 41)



Turn to the Best of Texas Landscape Guide

for a wide range of advice on selecting, planting and maintaining plants that perform best in Texas.

This book includes sunlight requirements, water usage, WaterWise tips, planting advice for over 300 plants, shrubs, trees and more!

PLUS, get additional plant information at your fingertips using your smartphone!



Texas Nursery & Landscape Association

Visit www.tnlaonline.org to purchase your copy of the Best of Texas Landscape Guide Third Edition!



(continued from page 39)

Dragon' and 'AU Golden Sunshine', are actually named 'Jinnong' and 'Jinyang' in China. Jane told me that 'nong' pronounces similar with 'long' which means 'dragon' in English, and 'yang' means sun and sunshine. Both were selected in the 1980s, after an extensive field investigation which began in 1978. 'AU Golden Sunshine' was selected from the wild in September, 1982, in Chongyang country and was then grafted in the garden in Hubei. 'AU Golden Dragon' was a large fruit taken from a distillery and the seeds of that fruit sowed. The seedlings bore fruit in 1985 and 'AU Golden Dragon' was selected from that population. The golden kiwi, *A. chinensis*, is less popular in China than the green fleshed varieties of *A. deliciosa*, except the variety 'Hongyan', which is red fleshed with a short shelf life. She was surprised that I thought

eating the skin of the golden fleshed varieties was fine. Plants need to be very well drained and are often planted on wide raised beds. Finally, I learned that most commercial plants are grafted, on *A. deliciosa*, in particular. While I think this has to do with disease resistance, it may also slow down the exceptional vigor of *A. chinensis* and make for an easier to maintain planting.

Dr. Hongwen Huang was a PhD student at Auburn (1990-1994) and provided the original cuttings to Dr. Joe Norton, his advisor during that period. After a very productive career as Director and Professor at the Wuhan Botanical Garden, he is currently the Director of the South China Botanical Garden. By most accounts, he's the expert and "wrote the book" on kiwis. In 2007, Auburn University and the Hubei Institute of Fruit and Tea, signed an agreement

and plants are on the market, albeit there have been a few issues on availability and pricing. For those interested, the Gold Kiwi Group, has a website that describes product and availability of the two patented varieties that have performed well at SFA Gardens: <http://growaukiwi.info/contact.htm>.

As a trialing agreement, our original vines came to us in November, 2010 via Dr. Jay Spiers, Auburn University. They were planted in 2011 and our first crop in 2014 resulted in 144 lbs of nice golden kiwis from six vines of 'Golden Dragon'. The general consensus was yield and quality looked good. With two crops in a row, while not the final verdict, there's now some room for optimism that we can produce kiwis in Texas. Kiwis are male or female. We have three female varieties, 'AU Golden

(continued on page 42)

The Green Industry Professional's Choice for Irrigation & Landscape Supplies.

Resource:

(noun) a source of supply, support, or aid, especially one that can be readily drawn upon when needed.

Horizon is your #1 green industry resource, specializing in every major area of your business—and doing it all under one roof.

Expect the best when you step into a Horizon store:

- ◆ Knowledgeable, Professional Staff
- ◆ Contractor-Grade Product Selection
- ◆ Full Service Repair Centers with Factory Trained Mechanics*
- ◆ Dedicated Parts Hotline 844-411-PART
- ◆ Online Ordering with Horizon 24/7



*In Select Locations

Scan here to visit us online or stop in to your local Texas Horizon store.



Alliance 817.232.3380
Austin ★ 512.282.2331
Bedford ★ 817.545.7756
Corpus Christi ... 844.804.1501
Dallas 972.466.1600
Frisco 972.712.5000

Houston ★ 713.934.9500
Richardson ★ 972.680.0007
Round Rock 512.255.1990
San Antonio 210.408.9090
Spring 281.681.0600

Horizon

irrigation | outdoor living | landscape | equipment

(continued from page 41)

Dragon', 'AU Golden Sunshine', and 'Au Fitzgerald' coupled with three males 'CK3', 'Tiger', and 'AU Authur', respectively. One male for every four to six females is considered sufficient. AU Golden Dragon' has been the high performer here at SFA. We do have vine health issues. Some vines suddenly wilt, die back, some all the way to the ground and then typically reemerge from the crown with very vigorous suckers. Cause remains undetermined.

We have much to learn. We are excited to be working with Tim Hartmann and colleagues at Texas A & M University as they ramp up evaluation and research plots. In the next few years, we'll know if kiwis are an exciting new fruit for Texas – or not. Even if they're a go in scattered small farms of the South, I'm convinced there's a potential

bigger opportunity available – one that capitalizes on mass markets and wholesale/retail nurseries to supply plants to homeowners. In fact, the two female varieties that have performed for us need to be in the hands of a wide range of enthusiastic gardeners across the South. Never underestimate what good gardeners can do with the right plant material. For nurseries, the plant roots easy and grows very fast so it's all about timing the crop to hit the market right. Plants can quickly outgrow a container. The fact that you need a male and a female plant to make fruit complicates things. So I dreamed up a colorful "six pack" idea, perhaps four females and two males



in tubelings. Think fancy point of purchase promotion and a cheerful fact sheet hanger on each purchase – basically a small lug with an easy to grab handle, ready to plant in April or May. Charge a good price. The fact sheet would explain plant spacing and what a small pergola or overhead arbor might look like. I think it's a brilliant idea – others might think otherwise. Let's keep planting. ☺



Growing Together, Growing With You

Texas locations:

*Nursery location

Amarillo	Lubbock
Arlington*	Manor*
Austin	Mcallen
Beaumont	Mckinney
Benbrook	Mesquite
College Station*	Pflugerville*
Corpus Christi*	Plano
Dallas	Prosper *
Fort Worth*	San Antonio*
Garland*	Spring*
Houston*	Stafford
Katy	Tyler
Lewisville*	

John Deere Landscapes and Shemin Landscape Supply are excited to announce the joining of our two companies to serve Texas!

Our growth will help bring together a complete line of irrigation, landscape lighting, fertilizers, nursery, seed, tools, drainage, hardscapes, golf course supplies, and more!



800-347-4272
www.JohnDeereLandscapes.com
www.Shemin.net

New Members

Welcome! TNLA would like to welcome its new members. If you would like to become a member, or if you have any questions or concerns about your current membership, please contact us at 800.880.0343. Visit www.tnlaonline.org to learn about the benefits of becoming a part of TNLA.

REGION 1

Education

Windham School District
Phillip Williams
1617 CR 4229
Pearsall, TX 78061

REGION 2

Retail

Madisonville Country Garden Center
Dale Veselka
4461 FM 3091
Madisonville, TX 77864
www.madisonvillegardencenter.net

Landscape

Mogonye Land Tech, LLC
Stephen Mogonye
PO Box 2457
Mont Belvieu, TX 77580
www.mogonyelandtech.com

REGION 3

Retail

McDade Nursery
Stephen Gent
1000 N Tool Dr.
Kemp, TX 75143
www.mcdadenursery.com

REGION 4

Landscape

Advantage Lawn Service, LLC
Greg Budde
2217 Grand Canyon Ct.
Carrollton, TX 75006
www.advantagelawnservice.com

Love Your Lawn

Monty Allen
521 J Place #625
Plano, TX 75074
www.loveyourlawn.net

FineLines Design Studio

Melda Clark
1925 Valley View Lane, Suite 101
Farmers Branch, TX 75234
www.finelinedesignstudio.com

Grower

Dallas Wholesale Nursery
Peter Parada
4109 Bretton Bay Lane
Dallas, TX 75287
www.dallaswholesalenursery.com

Government

University of Texas Southwestern Medical Center
Gary Sirkel
5323 Harry Hines
Dallas, TX 75390

REGION 5

Supplier

Branch Media Pro
Mike Branch
3725 Ashford Ave.
Fort Worth, TX 76133

Fisher Irrigation Consultants, Inc.

Ben Fisher
PO Box 211043
Bedford, TX 76095
www.irrigationeducation.com

Landscape

Premier Oaks Landscape Management, LLC
Anthony Harris
5128 Nash Lane
Fort Worth, TX 76244
www.premieroakslandscape.com

Grower

Mingos Nursery & Garden Center
Mannie Pace
9744 East Bankhead Hwy
Aledo, TX 76008

Government

Fort Worth Botanic Garden
Joyce Block
107 Cherokee Trail
Alvarado, TX 76009

Student

Tarrant County College
Alexander Rueter
3101 Shoreline Dr.
Burleson, TX 76028

North Central Texas College

Beth Saucer
151 CR 493
Muenster, TX 76252

REGION 7

Landscape

Texas Commercial Landscape & Hardscape Specialist, Inc.
Christopher Myers
5111 N. 10th #208
McAllen, TX 78504
www.tchsc.com

Government

Texas A&M AgriLife Extension Service
Ashley Gregory
410 N. 13th Ave.
Edinburg, TX 78541

REGION 8

Supplier

Austin Wood Recycling
Chris Hobbs
3875 E. Whitestone Blvd.
Cedar Park, TX 78613
www.austinwoodrecycling.com

Landscape

Nightsceenes Landscape Lighting
Paul Gosselin
205 Deer Forest
Kingsland, TX 78639
www.night-scenes.com

Clearwater Commercial Landscapes

Jason Larsen
PO Box 80653
Austin, TX 78758
www.clearwatercl.com

Government

Lower Colorado River Authority
Brett Brian
PO box 220
Austin, TX 78767

Education

Kileen ISD
John Melvin
514 Gazelle Trail
Harker Heights, TX 76548

Student

Texas State Technical College
Brandon Holt
910 Duval Ct.
Temple, TX 76501

REGION 9

Supplier

IlluminFx Lighting Systems
AJ Hetzke
22 Harcourt Rd.
Rochester, NY 14606
www.illuminfx.com

Anchor Wall Systems

Christopher Ebbesen
5959 Baker Rd., Ste. 390
Minnetonka, MN 55345
www.anchorwall.com

Atlas Greenhouse Systems, Inc.

Bill Mathis
PO Box 558
Alapaha, GA 31622
www.atlasgreenhouse.com

Blessing Gravel

Russ Gentry
4109 S. Hutchins Lane
Tishomingo, OK 73460
www.blessinggravel.com

Yardco Rock & Stone

Chris Ebersold
7729 Lawrence Road
Boynton Beach, FL 78745
www.yardcorocks.com

Grower

Vera's Nursery
Sergio Alvarez
15602 SW 177th Terrace
Miami, FL 33187
www.verasnursery.com

Marian Gardens Tree Farm

Gregg Brady
619 W. State Rd 50
Groveland, FL 34736
www.mariangardens.com

newly certified individuals

TCNP

Cole Adler, TCNP, Calloway's Nursery, Plano, TX
Crystal Miller, TCNP, Calloway's Nursery, Plano, TX
Tate Taylor, TCNP, SSC Service Solutions, College Station, TX

TCLP

Clifford Dyer, TCLP, TRDI, Inc., Temple, TX
Lawsona Gandy, TCLP, Trillium Designs, Sealy, TX



Learn more about the benefits of certification at www.tnlaonline.org.

TEXAS NURSERY & LANDSCAPE ASSOCIATION

7730 South IH-35, Austin, TX

512-579-3866 - FAX 512-280-3012

TEXAS CERTIFIED NURSERY PROFESSIONAL

TEXAS MASTER CERTIFIED NURSERY PROFESSIONAL

TEXAS CERTIFIED LANDSCAPE PROFESSIONAL

CERTIFICATION RENEWAL FORM

January 1, 2016 – December 31, 2017

Certified Individual's Name

EMPLOYER INFORMATION

Firm Name

Firm Address

City, State, Zip

Email

Work Telephone

Fax

Employer's signature (required)

Title

For those whose certification will expire on December 31, 2015. To renew your certification, you must: 1) be employed in the nursery industry, 2) complete this renewal form, 3) have your employer sign your form, and 4) send your form and renewal fee with any necessary Continuing Education Units (CEUs) to the TNLA office by December 31, 2015.

☐ Texas Certified Nursery Professional, Texas Master Certified Nursery Professional or

Texas Certified Landscape Professional **Employed by TNLA member firm**.....\$50.00

☐ Texas Certified Nursery Professional, Texas Master Certified Nursery Professional or

Texas Certified Landscape Professional **Employed by TNLA non-member firm**.....\$100.00

Upon receipt of your renewal form, fee and documentation of your CEU points, a new TCNP, TMCNP or TCLP certificate will be printed and mailed to you.

Your certification will be valid through December 31, 2017.

Thank you for your support of the TNLA Certification Program. If you have any questions, please call the TNLA Certification department at 512-579-3866.

Payment Options:

☐ Check or money order enclosed (Payable to TNLA)

☐ Credit card (Please call TNLA at 512-579-3866 to provide your credit card information over the phone*)

*To comply with PCI compliance regulations, credit card information will no longer be asked for in written form.

FOR TNLA OFFICE USE ONLY

Receipt Date _____
Amt Rec'd \$ _____
Check # _____
MC/VISA/AMEX/DISC
Auth# _____
Member _____

Calendar of Events



NOVEMBER

- 5** Region VII Christmas Party at KBW Supply in Donna, Texas, 5:30-7:30pm
- 10** Region I Meeting at Peterson Brothers Nursery, 6:00-8:00pm
Region II Meeting at Plants for All Seasons, 6:00-8:00pm
Region IV Meeting at Living Earth Nurseries, 6:00-8:00pm
- 11** Fire Ants & Crazy Ants at Mercer Botanic Gardens in Humble, Texas, 12:00-2:00pm
- 13** Region III Christmas Party at Rick's, 6:00-8:00pm
- 17** Region V Game Feast sponsored by Hydromulch, 6:00-8:00pm

DECEMBER

- 8** Region IV Christmas Party, location TBD, 6:00-8:00pm
Region II Christmas Party at Cadillac Bar and Grill, 9 6:00-8:00pm
Region V Christmas Party at Fort Worth Botanic Garden, 4 6:00-8:00pm

JANUARY

- 21** Dallas Market center Tour & social Hour in Dallas, Texas at the January Total Home & Gift Market
- 26** CEU Workshop for Landscape Professionals Pesticide Training in Hoblitzelle, Texas
- 26-27** TNLA Winter Showcase at One World Theater in Austin, Texas

For meeting times and additional information, please visit www.tnlaonline.org

GROW your NETWORK
by connecting with us!

-  facebook.com/TNLAonline
-  [@LandscapeTexas](https://twitter.com/LandscapeTexas)
-  [Texas Nursery & Landscape Association Group](https://www.linkedin.com/groups/Texas-Nursery-Landscape-Association-Group-123456789)
-  tnlagreentalk.blogspot.com
-  [Green Matters E-Newsletter](#)

tnlaonline.org

ADVERTISERS INDEX

PAGE	ADVERTISER	WEBSITE
8	Arborjet	www.arborjet.com
20	BGI	www.bgi-usa.com
38	Davey Tree Expert Company	www.davey.com
48	Groundworks Texas	www.datepalm.com
2	Ewing	www.ewing1.com
12	Hotchkiss Insurance	www.hiallc.com
41	Horizon Irrigation	www.horizononline.com
38	Industrial Power	www.iptruck.com
37	Living Earth	www.livingearth.net
47	OHP	www.ohp.com
18	Saxon Becnel	www.saxonbecnelandsons.com
42	Shemin Nurseries, Inc.	www.shemin.net
36	Spring Meadow Nursery	www.springmeadownursery.com
46	Submatic	www.submatic-usa.com
22	Texas Green Industry	www.tgiwcgroup.com
24, 25	Thompson Group at Classic	www.classicfleet.com
4	Vitamin Institute	www.superthrive.com

SUBMATIC TECHNOLOGIES

WATER MANAGEMENT SOLUTIONS

PRODUCT GUIDE

Includes everything you need for the ultimate water management systems:

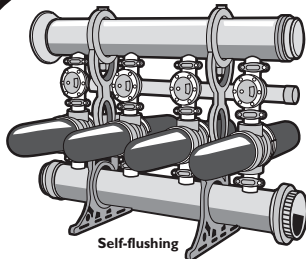
Driplines, Valves, Sprinklers, Controllers, Injectors, Hoses, Sensors, Tubing and much more.



State of the Art Filtration

NEW APOLLO DISC FILTER

★★ Reaching for the Stars ★★



Self-flushing

- For ponds, canals and rivers
- 50 to 3,500 GPM and up
- Automatic and pre-assembled
- Compact - fits in 14' x 6' area
- Quick backflush

Greenhouse & Nursery Systems

- For misting, humidifying, fogging and sprinkling

Super Fogger

- Efficient method for controlling greenhouse conditions (100 micron fog)
- Flow rate: 3.3 GPH



Bridgeless Micro Sprinkler

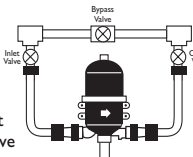


- Bridgeless design - no dripping
- Flat trajectory
- High distribution uniformity

Injectors

Proportional

- Constant rate
- Ratio adjustment
- Very smooth drive



Container Systems



Weight Assemblies

- Pressure compensating
- Highly versatile

Spray Stakes

- Unique oval pattern
- Multiple flow rates

3804-D Woodbury Drive

Austin, TX 78704

512.440.7744 • Fax 512.440.7793

OHP introduces

Segway® O

Greenhouse & Nursery Fungicide

PERFORMANCE IN A




GROUP OF ITS OWN

- Controls Pythium, Phytophthora and Downy mildew
- Unique class of chemistry, no cross resistance
- Vital part of your Downy mildew rotation
- Spray or drench applications

Segway® O

Fungicide

#segway_o 

@OHPsolutions 

ohp.com

(800) 356-4647



INSECTICIDES
FUNGICIDES
MITICIDES
PGRS
HERBICIDES

ohp | Partners
with
solutions

www.TATfpalms.com

***Produced in heavy soils...
...for use in heavy soils***

sales@tatfpalms.com



Washingtonia Filibusta



Med Fan Palm



Canary Island Date Palm



Windmill Palm



Pindo Palm



Sylvester Palm



**5203 County Road 397
Alvin, TX 77511**

Toll Free:

844-629-4142



Robellini



Queen



Podocarpus



Needle Palm



Sabal Minor



www.datepalm.com

**CONTACT
YOUR SALES REP
TODAY!**

**5203 County Road 397
Alvin, TX 77511**

(800)753-5127

sales@datepalm.com